

Wing
systemtronic

Wing
systemtronic

Quality, timeless design, excellence and adaptability are the values that guide Systemtronic's journey of over 30 years.

Since 1988 we develop and manufacture contemporary auxiliary furniture that provides solutions for both the contract and residential sectors, effectively addressing the needs of such diverse spaces as offices and meeting rooms, hotels, education centers, healthcare facilities, restaurants and homes.

Our collections feature auxiliary furniture, storage systems, solutions for new technologies, accessories and complements with impeccable design and a distinct approach to problem-solving that makes us unique.

Our products, certified by the Technological Institute AIDIMME, are 100 % manufactured in Europe using top quality materials and employing the best sustainability practices.

ENG

Calidad, diseño atemporal, excelencia y adaptabilidad son los valores que guían la trayectoria de más de 30 años de Systemtronic.

Desde 1988 desarrollamos y fabricamos mobiliario auxiliar contemporáneo que aporta soluciones tanto para el ámbito *contract* como para el residencial, con respuestas eficaces en espacios tan diversos como oficinas y salas de reunión, hoteles, centros educativos, centros de salud, restaurantes y hogares.

Nuestras colecciones proponen muebles auxiliares, sistemas de almacenaje, soluciones para nuevas tecnologías, accesorios y complementos con un diseño impecable y una propuesta diferente para la resolución de problemas que nos hace únicos.

Nuestros productos, certificados por el Instituto Tecnológico AIDIMME, son fabricados 100 % en Europa con materiales de máxima calidad y empleando las mejores prácticas de sostenibilidad.

ESP

Emotions & Solutions



Not many things bring as much serenity to a space as the image of a perfectly ordered shelf. Open to new horizons, at Systemtronic we have raised our sights to find solutions such as those of the Wing collection, which embrace spaces with its open wings. Furniture that breathes symmetry, while its horizontal and vertical lines merge with your walls in a symbiosis of design and architecture. A qualitative leap in the evolution of Systemtronic with all the reliability that comes from the values of good design, excellence and adaptability that guide our brand.

ENG

Pocas cosas aportan tanta serenidad a un espacio como la imagen de una estantería perfectamente ordenada. Abiertos a nuevos horizontes, en Systemtronic levantamos la mirada para encontrar soluciones como las de la colección Wing, que acogen nuestros espacios con sus alas abiertas. Muebles que respiran simetría, mientras sus líneas horizontales y verticales se funden con nuestras paredes en una simbiosis de diseño y arquitectura. Un salto cualitativo en la evolución de Systemtronic con toda la seguridad que proporcionan los valores del buen diseño, la excelencia y la adaptabilidad que guían a nuestra marca.

ESP

Looking upwards

A graduate of Industrial Design from Barcelona's Elisava University School of Design and Engineering, Mario Ruiz stands out for his discretion, allowing products to speak for themselves through their clean and coherent lines. His designs speak volumes in their simplicity; they live with their users without being conspicuous. His extensive career experience is remarkable for its multidisciplinary and international projection, with projects that span furniture, lighting and technology design, architecture and creative direction.

ENG

He has received over 50 awards in Europe and the United States, including the National Design Prize 2016, several Wallpaper Awards, Red Dot, IF, Deltas de Plata, Design Plus, among others. His work has been featured in several solo exhibitions, like the monographic show organized by the Instituto Cervantes of Milan during the Salone del Mobile 2018 or the one hosted by Feria Hábitat València 2018.

Licenciado en Diseño Industrial por la Escuela Universitaria de Diseño e Ingeniería Elisava de Barcelona, Mario Ruiz destaca por su discreción, dejando que los productos hablen por sí mismos a través de sus formas limpias y comprensibles. Sus diseños dicen mucho con poco; conviven con quien los usa sin hacer ruido. Su amplia trayectoria sobresale por su multidisciplinariedad y proyección internacional, con proyectos que abarcan el diseño de mobiliario, iluminación, tecnología, arquitectura y dirección creativa.

ESP

Ha recibido más de 50 galardones en Europa y Estados Unidos, incluyendo el Premio Nacional de Diseño 2016 y varios Wallpaper Awards, Red Dot, IF, Deltas de Plata, Design Plus, entre otros. Su trabajo ha protagonizado exposiciones individuales, como la monográfica organizada por el Instituto Cervantes de Milán durante el Salone del Mobile 2018 o la que le dedicó la Feria Hábitat València 2018.

Mario Ruiz





The Wing collection is a very versatile modular furniture system made of extruded aluminum. Its design is discreet, with a structure of essential shapes and shelves of subtle profiles that instill an expression of lightness and sophistication into the piece. The modules can be configured in multiple ways and heights to suit diverse needs and spaces, both in the contract and residential environments. The option to integrate sliding panels, oak or technical stone covers on the top shelf, as well as various accessories, serves to enhance and complement the functional nature of the system. ENG

La colección Wing es un sistema de muebles modulares muy versátil de aluminio extruido. Su diseño es discreto, con una estructura de formas esenciales y estantes de perfiles sutiles que otorgan a la pieza una imagen de ligereza y sofisticación. Los módulos pueden configurarse de múltiples formas y alturas para responder a diversas necesidades y espacios, tanto en el ámbito *contract* como en el residencial. La opción de integrar paneles deslizantes, embellecedores de roble o piedra técnica sobre el estante superior, así como otros accesorios, contribuye a ampliar y complementar la naturaleza funcional del sistema. ESP

Wing



At Systemtronic, we understand that working sustainably lays the foundations for an eco-efficient model which contributes to the reduction of our environmental footprint. The flexible and extremely adaptable design of the products in the Wing collection allows them to be reused, resulting in a longer lifespan. They are made with 100 % recyclable materials. At least 25 % of the aluminum used is recycled. The paints do not contain solvents, do not consume water and do not generate emissions or waste. The incorporated fabrics are made entirely of recycled material and its manufacturing process does not generate any rubbish. The result is a lower environmental impact.

ENG

En Systemtronic entendemos que el quehacer sostenible sienta las bases de un modelo eco-eficiente que contribuye a reducir la huella ambiental. El diseño flexible y extremadamente adaptable de los productos de la colección Wing permite la reutilización de los mismos, lo que hace que su vida útil sea más larga. Los materiales con que se fabrican son 100 % reciclables. Al menos el 25 % del aluminio utilizado, es reciclado. Las pinturas usadas no contienen disolventes, no consumen agua y no generan emisiones ni vertidos. Por su parte, los tejidos incorporados están compuestos enteramente por material reciclado y su proceso de fabricación no genera ningún residuo. El resultado es un impacto medioambiental menor.

ESP

Modular means sustainable



WING COLLECTION

- 18 1600 WALL SHELVES • ESTANTERÍAS DE PARED
- 32 1600 FREESTANDING SHELVES • ESTANTERÍAS *FREESTANDING*
- 48 1600 CORNER SHELVES • ESTANTERÍAS DE ESQUINA
- 64 800 WALL SHELVES • ESTANTERÍAS DE PARED
- 70 800 FREESTANDING SHELVES • ESTANTERÍAS *FREESTANDING*
- 76 DESK • ESCRITORIO
- 80 WARDROBE • ARMARIO
- 84 BENCH • BANCO
- 88 TV STAND • SOPORTE TV

- 92 ACCESSORIES • ACCESORIOS
- 106 TECHNICAL DETAILS • DETALLES TÉCNICOS
- 122 COMPOSITIONS • COMPOSICIONES
- 138 FINISHES • ACABADOS

Index

Wing
Collection



Modular wall shelves, 1600 mm wide. The shelves, with rounded corners, have trims on both ends that conceal the interior of the profile. It has wall hooks designed to be flexible in case of unevenness. The bases measure 250 mm. It is possible to integrate 400 mm and 800 mm sliding panels, in front or rear position. Combinable with the rest of the references in the collection. The maximum recommended height is seven shelves.

ENG

Estantería modular de pared de 1600 mm de ancho. Los estantes, de ángulos redondeados, tienen embellecedores en ambos extremos que ocultan el interior del perfil. Lleva enganches a pared pensados para ser flexibles ante cualquier desnivel. Las bases miden 250 mm. Es posible integrar paneles deslizantes de 400 mm y 800 mm, en posición frontal o posterior. Combinable con el resto de referencias de la colección Wing. La altura máxima recomendada es de siete estantes.

ESP

1600 Wall Shelves





1600 Wall Shelves /
7 shelves / rust rame

Accessories:
(6x) 800 mm panels /
beige red



1600 Wall Shelves /
5 shelves / rust rame



Panels and shelves in different colors

COMPOSITION 3
1600 Wall Shelves
1600 Freestanding Shelves
page 126









Modular freestanding shelves, 1600 mm wide. The shelves, with rounded corners, have trims on both ends that conceal the interior of the profile. Versions up to three shelves high have 250 mm bases. To ensure stability, versions from a height of four shelves on come with 400 mm bases that can be concealed using a cover. It is possible to integrate 400 mm and 800 mm sliding panels, in front or rear position. Combinable with the rest of the references in the collection. The maximum recommended height is seven shelves.

ENG

Estantería modular *freestanding* de 1600 mm de ancho. Los estantes, de ángulos redondeados, tienen embellecedores en ambos extremos que ocultan el interior del perfil. Las versiones de hasta tres estantes de altura llevan bases de 250 mm. Para garantizar la estabilidad, a partir de cuatro estantes lleva bases de 400 mm que pueden ocultarse con un embellecedor. Es posible integrar paneles deslizantes de 400 mm y 800 mm, en posición frontal o posterior. Combinable con el resto de referencias de la colección Wing. La altura máxima recomendada es de siete estantes.

ESP

1600 Freestanding Shelves

COMPOSITION 5
1600 Wall Shelves
1600 Freestanding Shelves
page 127



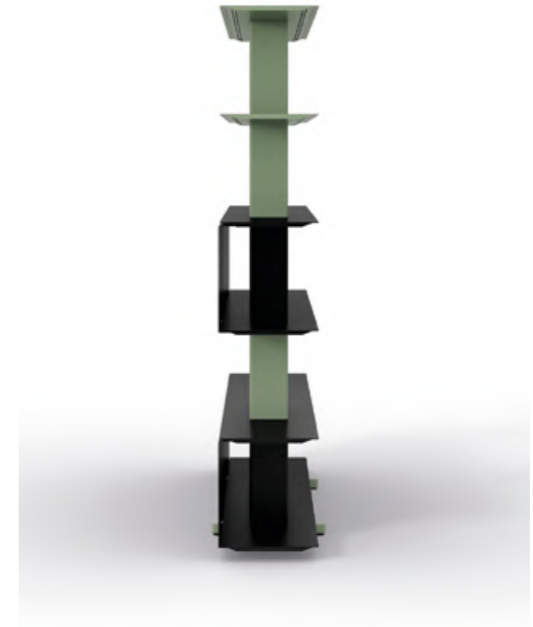
1600 Freestanding Shelves /
3 shelves / reseda green



1600 Freestanding Shelves /
6 shelves / reseda green

Accessories:
(4x) 800 mm panels /
black

Color change:
(4x) color change of a
1600 mm shelf unit / black
(4x) color change of a
vertical upstand unit / black



The perfect
way to separate
environments

COMPOSITION 6
1600 Freestanding Shelves
page 128



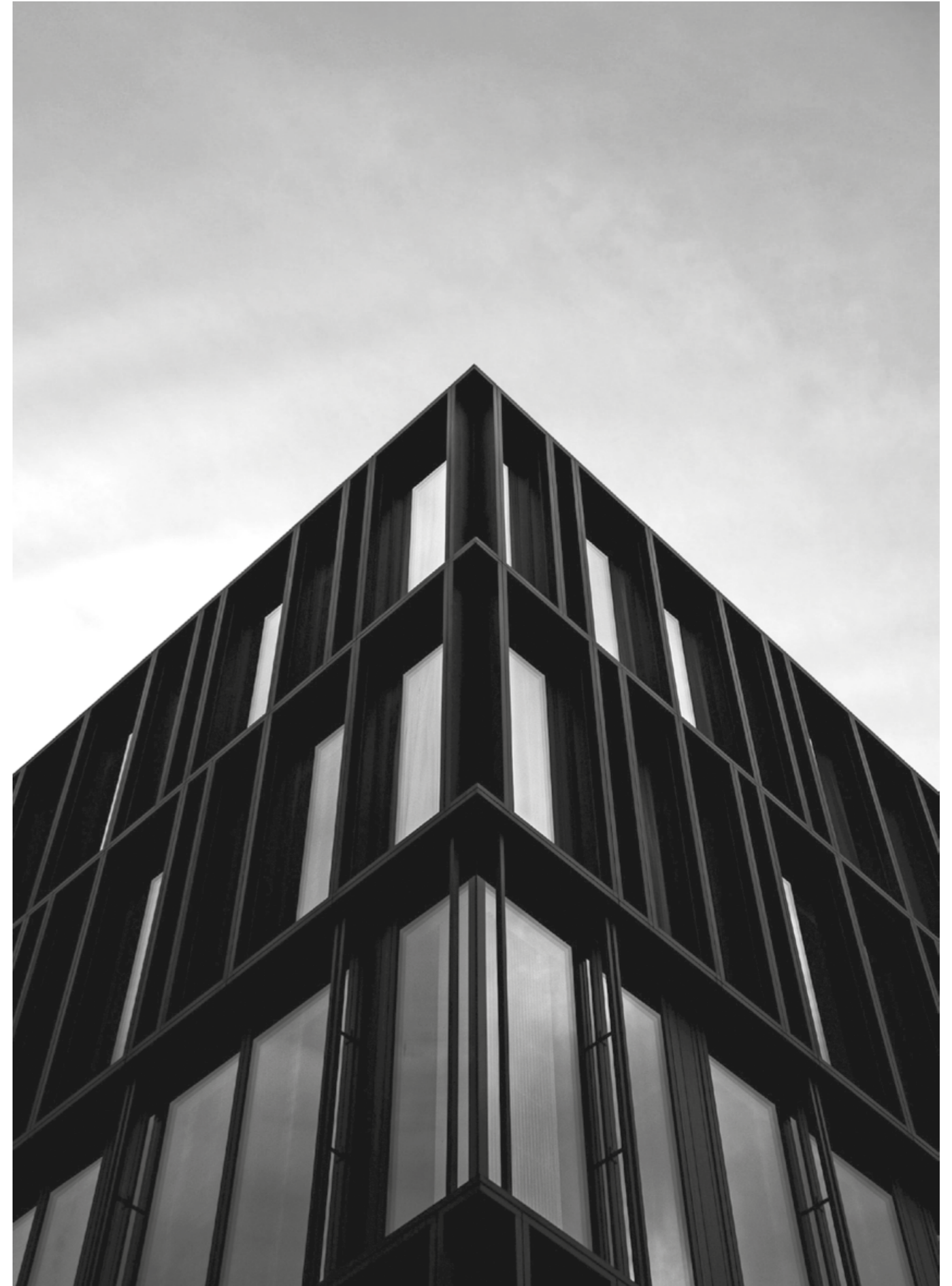


Do you like
to read?

COMPOSITION 7
1600 Wall Shelves
1600 Freestanding Shelves
page 128



We look up to architecture





Corner freestanding, 1600 mm inner width. Each level comprises right-side and left-side shelves, joined by two inner flat bars that fix them in place. The shelves, with rounded corners, have trims on both ends that conceal the interior of the profile. Its corner arrangement and its strong joints give this model great stability, which allows it to keep the measurement of its bases at 250 mm, without the need to use wall or floor anchorings. It is possible to integrate sliding panels of 725 mm and 1125 mm, in front or rear position. Combinable with the rest of the references in the collection. The maximum recommended height is seven shelves.

ENG

Estantería esquinera de 1600 mm de ancho interior. Cada nivel está compuesto por estantes de lateral derecho e izquierdo, unidos mediante dos pletinas en su interior que sirven para fijarlos. Los estantes presentan esquinas redondeadas y embellecedores en los extremos que ocultan el interior del perfil. Su disposición en esquina y sus fuertes uniones dotan a este modelo de gran estabilidad, lo que permite mantener la medida de sus bases en 250 mm, sin necesidad de enganches a pared o a suelo. Es posible integrar paneles deslizantes de 725 mm y 1125 mm, en posición frontal o posterior. Combinable con el resto de referencias de la colección Wing. La altura máxima recomendada es de siete estantes.

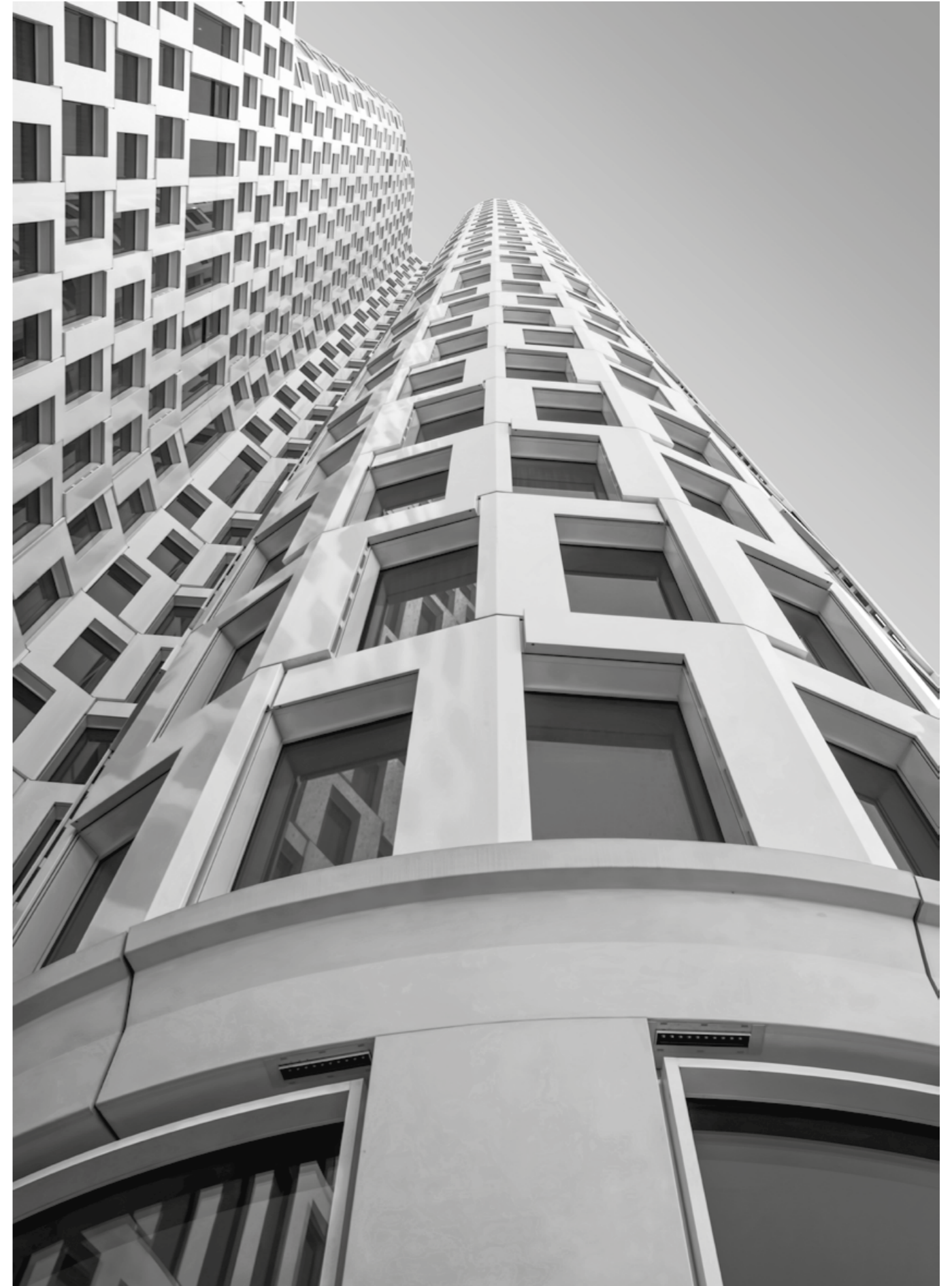
ESP



1600 Corner Shelves



Open to
new horizons







1600 Corner Shelves /
6 shelves / silk grey



1600 Corner Shelves /
6 shelves / silk grey

Accessories:
(6x) 400 mm panels / bronze bagana
(6x) 800 mm panels / bronze bagana
(6x) 725 mm panels / bronze bagana



Ideal for making
the most of space





Modular wall shelves, 800 mm wide. The shelves, with rounded corners, have trims on both ends that conceal the interior of the profile. It is supported on 250 mm bases and wall hooks designed to adapt to possible unevenness. Optionally, it can integrate 800 mm sliding panels, in front or rear position. Combinable with the rest of the references in the collection. The maximum recommended height is seven shelves.

ENG

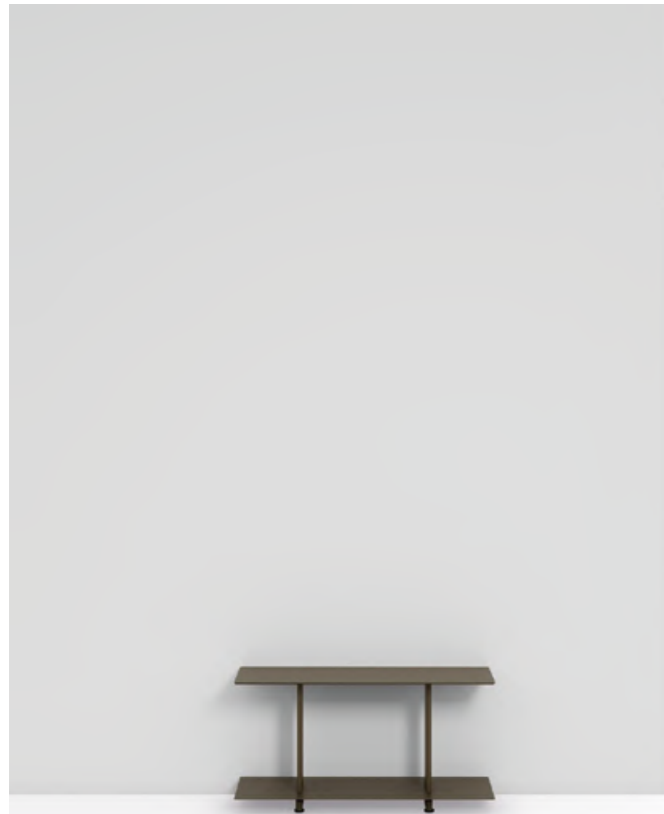
Estantería modular de pared de 800 mm de ancho. Los estantes, de ángulos redondeados, llevan embellecedores en ambos extremos para ocultar el interior del perfil. Se sustenta sobre bases de 250 mm y enganches a pared previstos para adaptarse a posibles desniveles. Opcionalmente puede integrar paneles deslizantes de 800 mm, en posición frontal o posterior. Combinable con el resto de referencias de la colección Wing. La altura máxima recomendada es de siete estantes.

ESP

800 Wall Shelves



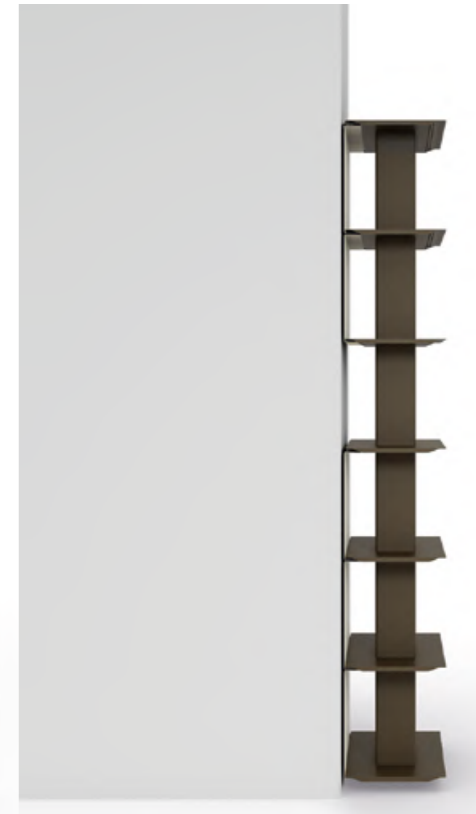
800 Wall Shelves /
2 shelves / rust rame



From a
bedside
table to a
bookshelf

800 Wall Shelves /
7 shelves / rust rame

Accessories:
(5x) 800 mm panels /
silk grey







Modular freestanding shelves, 800 mm wide. The shelves, with rounded corners, have trims on both ends that conceal the interior of the profile. Versions up to three shelves high have 250 mm bases. To guarantee stability, from four shelves it has 400 mm bases that can be hidden with a trim. Optionally, it can integrate 800 mm sliding panels, in front or rear position. Combinable with the rest of the references in the collection. The maximum recommended height is seven shelves.

ENG

Estantería modular *freestanding* de 800 mm de ancho. Los estantes, de ángulos redondeados, llevan embellecedores en ambos extremos para ocultar el interior del perfil. Las versiones de hasta tres estantes de altura llevan bases de 250 mm. Para garantizar la estabilidad, a partir de cuatro estantes lleva bases de 400 mm que pueden ocultarse con un embellecedor. Opcionalmente puede integrar paneles deslizantes de 800 mm, en posición frontal o posterior. Combinable con el resto de referencias de la colección Wing. La altura máxima recomendada es de siete estantes.

ESP

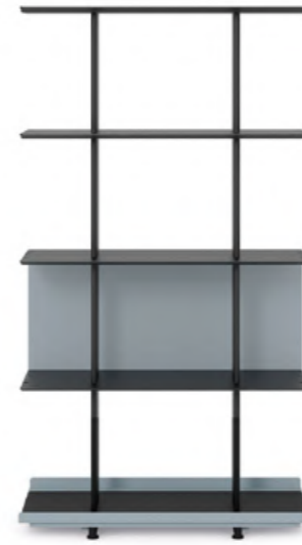
800 Freestanding Shelves

800 Freestanding Shelves /
3 shelves / black



800 Freestanding Shelves /
5 shelves / black

Accessories:
(1x) 800 mm panel /
silver grey
(2x) 800 mm profiles /
silver grey



The best size for
small spaces



Desk 1600 mm long, with shelves that can be used to store books, office materials, decorative items, etc. With this piece of furniture, the collection reinforces its possible use as a key piece for remote working from home. Designed for individual use or to form compositions with the Wing shelves. The board can be requested in a natural oak finish, or white, black or oak industrialized laminate. Available in two versions: wall-mounted and freestanding.

Escritorio de 1600 mm de longitud cuyas baldas permiten la colocación de libros, materiales de oficina, adornos, etc. Con este mueble, la colección refuerza su posible uso como pieza clave para ejercer el teletrabajo desde casa. Pensado para su uso individual o formando composiciones con las estanterías Wing. El tablero puede solicitarse en acabado roble natural, o laminado industrializado blanco, negro o roble. Disponible en dos versiones: a pared y autoportante.

ENG

(1x) 1600 Freestanding Desk /
black / natural oak board

ESP



Desk

Wing

Desk



COMPOSITION 16
1600 Wall Desk
1600 Wall Shelves
800 Wall Shelves
page 134

Open wardrobe that simultaneously makes it possible to organise clothes, shoes, bags and other accessories thanks to the way it unites the hanging rod with shelves. Designed for individual use or combined with other elements of the same unit, as well as forming compositions with the Wing shelves. Available in two sizes, 1600 and 800 mm; and two versions, wall-mounted and freestanding.

Armario abierto que posibilita al mismo tiempo la organización de ropa, zapatos, bolsos y otros accesorios, gracias a la forma en que combina la barra de colgar con baldas. Pensado para su uso individual o combinado con otras unidades del mismo, así como formando composiciones con las estanterías Wing. Disponible en dos medidas, 1600 y 800 mm; y dos versiones, a pared y autoportante.

ENG

(1x) 800 Freestanding Shelves /
7 shelves / silk grey
(1x) 1600 Freestanding
Wardrobe / silk grey /
chrome-plated hanging rod

Accessories:
(4x) joints / silk grey

ESP



Wardrobe

COMPOSITION 17
1600 Wall Wardrobe
1600 Wall Shelves
800 Wall Shelves
1600 Bench
page 135



1600 mm long bench with upholstery available in three 100 % recycled finishes. Ideal to be placed at the foot of a bed. This piece of furniture is a practical two-in-one: being upholstered, it becomes a comfortable seat and, thanks to its lower shelf, it offers extra space to store plaids, shoes, cushions, books or other objects.

ENG

(1x) 1600 Bench / silk grey /
light grey N51 upholstery

Banco de 1600 mm de longitud con tapicería disponible en tres acabados 100 % reciclados. Ideal para ser ubicado a los pies de una cama. Este mueble es un práctico dos en uno: al ser tapizado, resulta un asiento cómodo y, gracias a su repisa inferior, ofrece un espacio extra para guardar *plaids*, zapatos, cojines, libros u otros objetos.

ESP



Bench



New models to upgrade your space

1600 mm wide TV stand designed for individual use or to form compositions with the Wing shelves. Includes a rear panel that hides the connections. Supports screens up to 70 inches, with a maximum width of 1600 mm. VESA 100, 200, 300, 400 and 600 mounting interface standard. Both in its home and office versions, this product can be wall-mounted or freestanding. Includes a rear cover that hides the connections.

ENG

Soporte de televisores de 1600 mm de ancho diseñado para su uso individual o formando composiciones con las estanterías Wing. Incluye una trasera que oculta las conexiones. Admite pantallas de hasta 70 pulgadas, con un ancho máximo de 1600 mm. Estándar de interfaz de montaje VESA 100, 200, 300, 400 y 600. Tanto en sus versiones *home* como en su versión *office*, este producto admite ser colocado a pared o de forma autoportante. Incluye una tapa trasera que oculta las conexiones.

ESP

(1x) 1600 Freestanding
Home TV Stand / white



(1x) 1600 Freestanding
Office TV Stand / white



TV Stand



Accessories created to extend and complement the functional nature of the system. Their variety in size allows for an infinite number of uses, both decorative as well as functional and organisational. The design is adapted to the dimensions of the collection.

ENG

Accesorios creados para ampliar y complementar la naturaleza funcional del sistema. Su variedad en tamaño permite infinidad de usos, tanto decorativos como funcionales y de organización. El diseño está adaptado a las dimensiones de la colección.

ESP

Accessories

The panels are housed between shelves and can be placed interchangeably in front of and behind the shelf. The shelves have discrete cavities that act as rails and allow these sliding panels to be anchored.

Los paneles se alojan entre estantes y pueden colocarse indistintamente delante y detrás de la estantería. Los estantes constan de discretas cavidades que hacen la función de carriles y permiten el anclaje de estos paneles deslizantes.



Natural oak veneer or industrialized laminate for sliding panels.

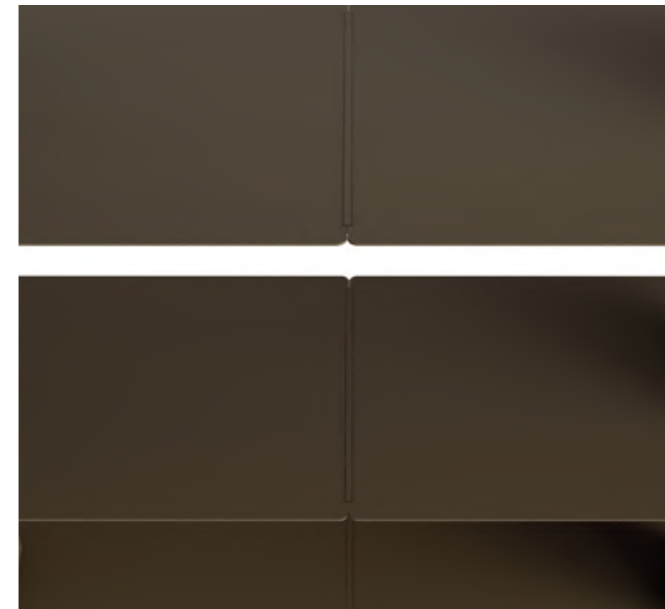
Chapado de roble natural o laminado industrializado para los paneles deslizantes.



Oak interior/exterior veneer
Chapado interior/exterior roble

Accessory designed to join the shelves of two shelvings placed continuously.

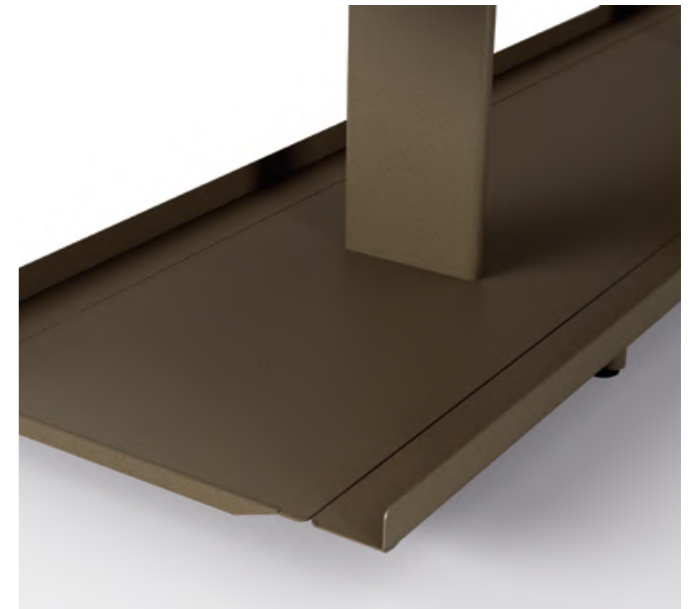
Accesorio pensado para unir las baldas de dos estanterías colocadas de forma continua.



Joint
Junta

Profiles made of steel that lengthen the lower shelf and hide the bases. Only for 400 mm bases.

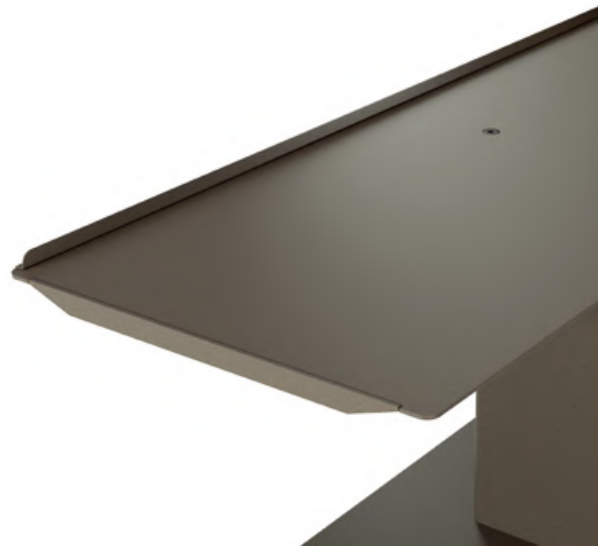
Perfiles fabricados en acero que alargan el estante inferior y ocultan las bases. Solo para bases de 400 mm.



Profile
Perfil

The front edge provides a lip at the front of the shelves to prevent objects from falling. It can be placed indistinctly in front of or behind the shelving and on any of its levels.

El tope de estante proporciona un borde frontal a las baldas para evitar la caída de objetos. Puede colocarse indistintamente delante o detrás de la estantería y en cualquiera de sus niveles.



Front edge
Tope de estante

Separate plate to be placed on top of the last shelf to hide the connecting screws. Available in: Techlam Kalos Bianco porcelain, Techlam Tempesta porcelain, matt natural oak, industrialized laminate, and painted aluminum in any of the 10 colors of the collection.

Plancha independiente que se coloca encima de la última balda para ocultar los herrajes de unión. Disponible en: porcelánico Techlam Kalos Bianco, porcelánico Techlam Tempesta, roble natural mate, laminado industrializado, y aluminio pintado en cualquiera de los 10 colores de la colección.



Premium top board
Tablero superior premium

Accessory that delimits the storage space of the shelves at one or both ends.

Accesorio que delimita el espacio de almacenaje de la estantería por uno de sus extremos o ambos.

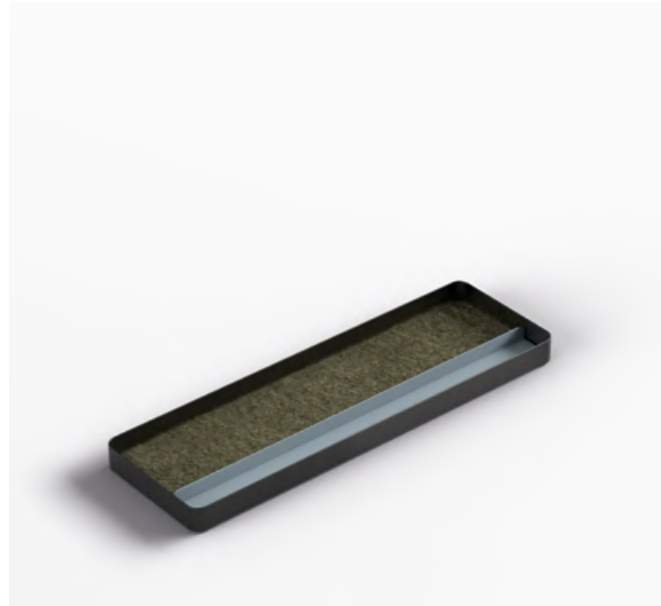


Side enclosure
Cerramiento lateral



Tray to place small objects. It has an interior felt that protects the drawer and objects. There is the possibility of adding a mobile divider.

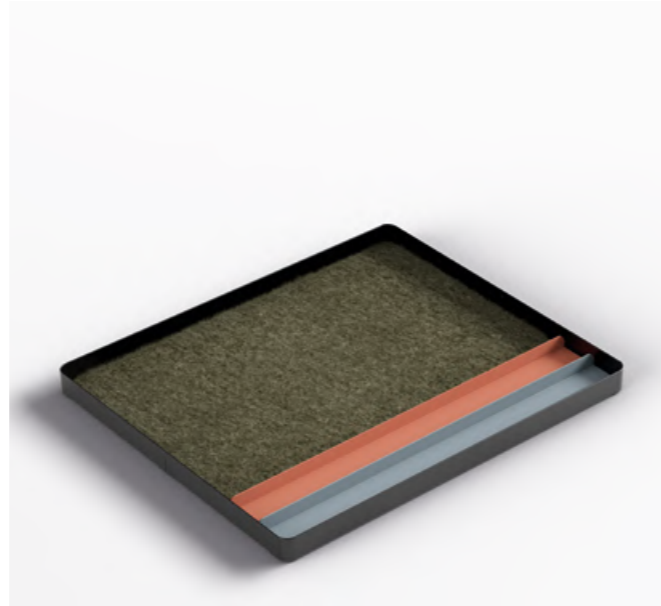
Bandeja para colocar pequeños objetos. Lleva un fieltro interior que protege el cajón y los objetos. Existe la posibilidad de añadirle un separador móvil.



Small tray
Bandeja
pequeña

It is the widest tray of the Wing accessories. It has an interior felt that protects the tray and the objects that are placed on it. It is very suitable for storing folios and paper documents. There is the possibility of adding two mobile dividers.

Es la bandeja más amplia de los accesorios Wing. Lleva un fieltro interior que protege la bandeja y los objetos que se pongan encima. Resulta muy indicada para guardar folios y documentos de papel. Existe la posibilidad de añadirle dos separadores móviles.



Tray
Bandeja

Tall container to store all kinds of objects. It has an interior felt that protects the drawer and objects. There is the possibility of adding a mobile divider.

Contenedor alto para almacenar todo tipo de objetos. Lleva un fieltro interior que protege el cajón y los objetos. Existe la posibilidad de añadirle un separador móvil.



Drawer
Cajón

Box designed to store index cards, standard A4-size hanging folders and other documents in an orderly manner. This accessory cannot be used on those shelves with panels.

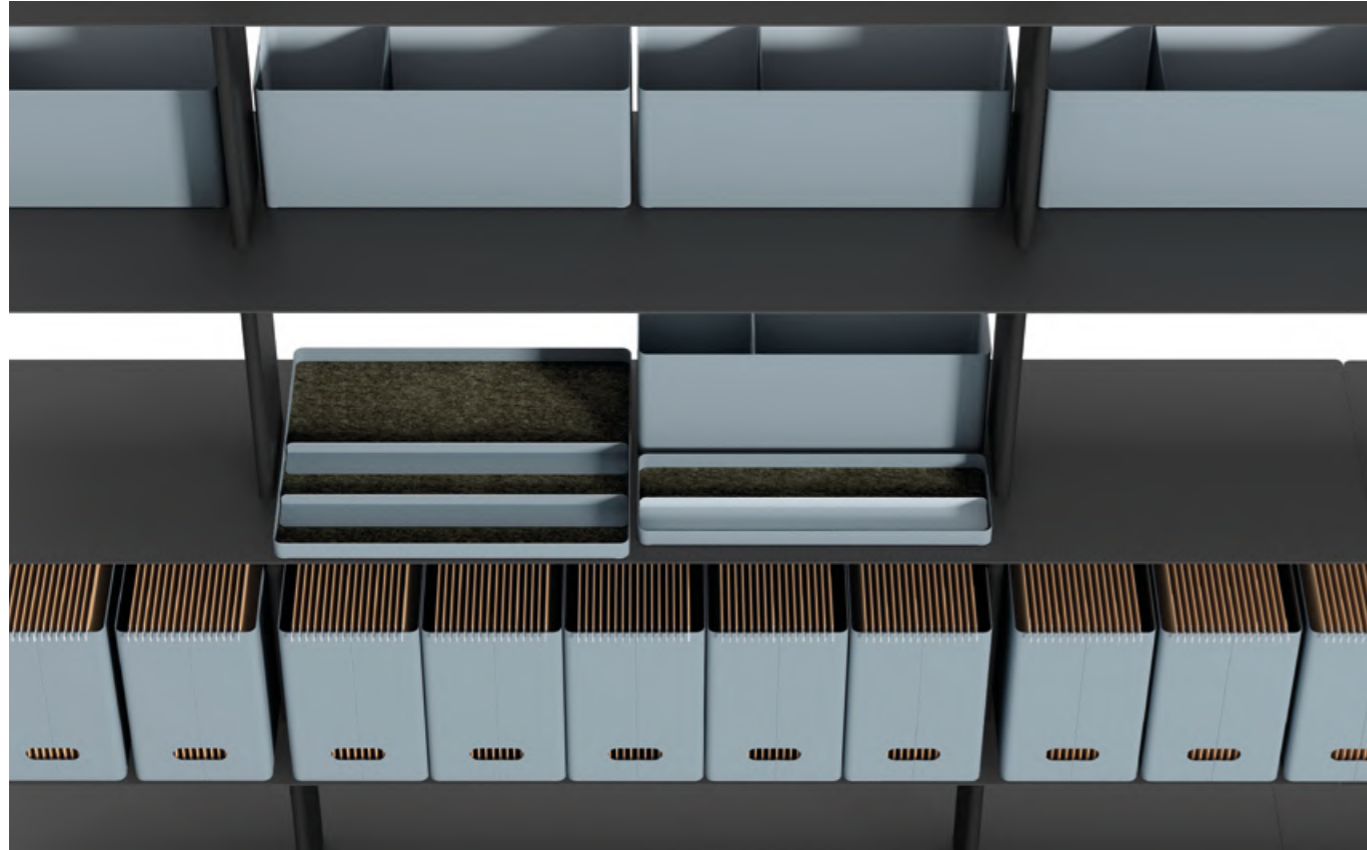
Caja diseñada para guardar fichas, carpetas colgantes estándar tamaño A4 y otros documentos de manera ordenada. Este accesorio no se puede usar en aquellas baldas con paneles.



File holder
Archivador

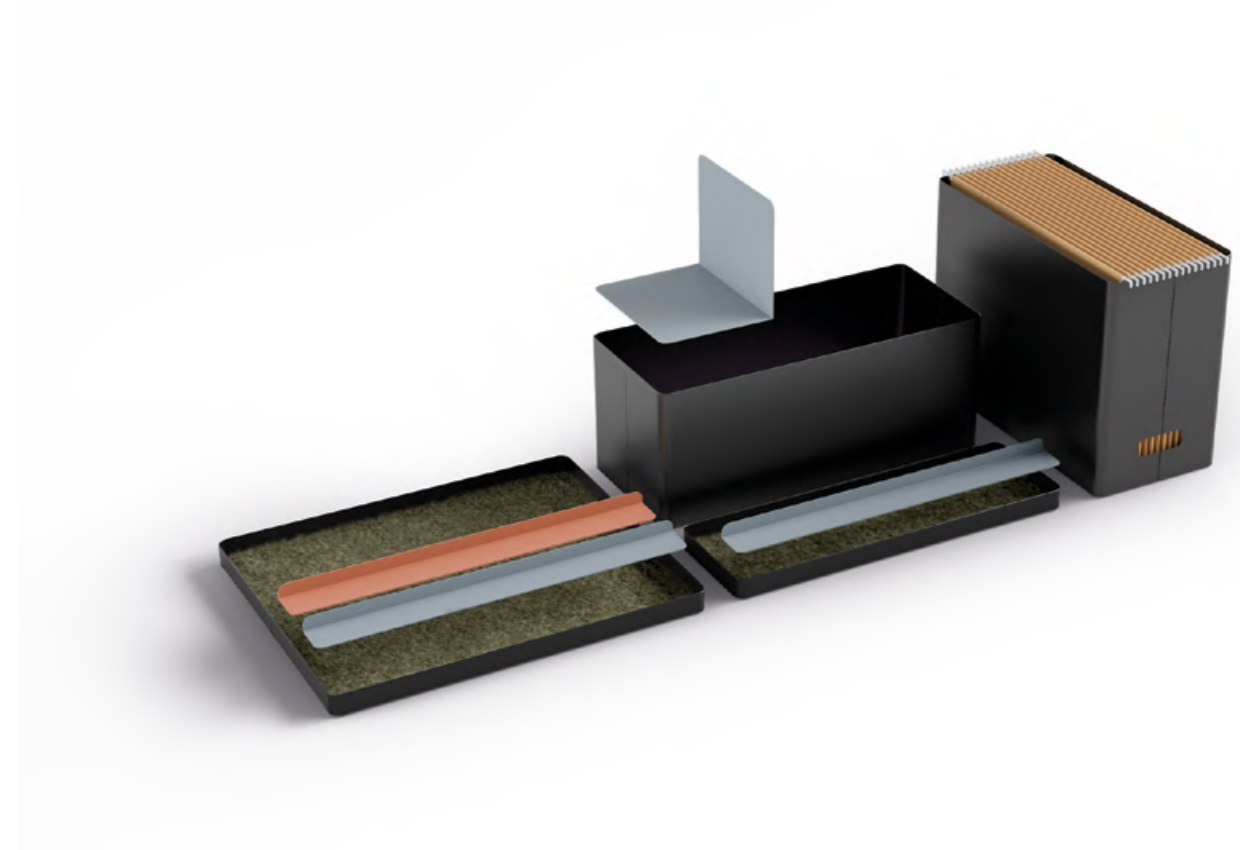
Tray, small tray, drawer and file holder on a Wing shelf.

Bandeja, bandeja pequeña, cajón y archivador en una estantería Wing.



Tray, small tray, drawer and file holder.

Bandeja, bandeja pequeña, cajón y archivador.



Practical and discreet accessory for book holding.
Available in two sizes.

*Accesorio práctico y discreto para sostener libros.
Disponible en dos tamaños.*



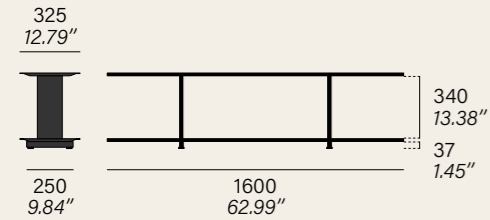
Small bookend
Sujetalibros
pequeño

Bookend
Sujetalibros



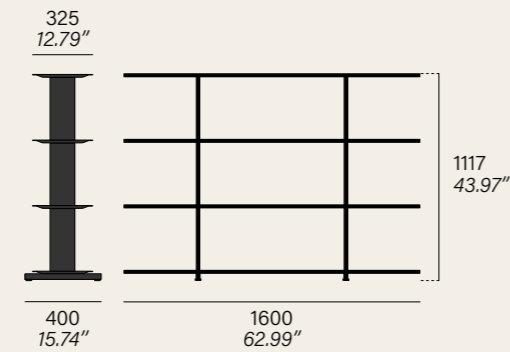
Technical Details

Wall & Freestanding Shelves

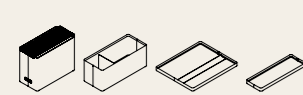


Freestanding Shelves

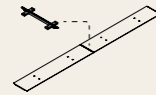
400 mm bases from 4 shelves.
Bases de 400 mm a partir de 4 estantes.



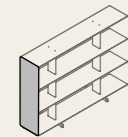
Accessories Wall & Freestanding Shelves



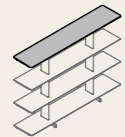
Container accessories
Accesorios contenedores



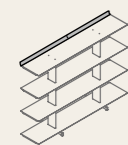
Joint
Junta



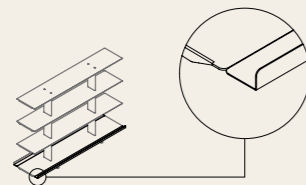
Side enclosure
Cerramiento lateral



Premium top board
Tablero superior premium



Front edge
Tope de estante



Profile for 400 mm bases
Perfil para bases de 400 mm

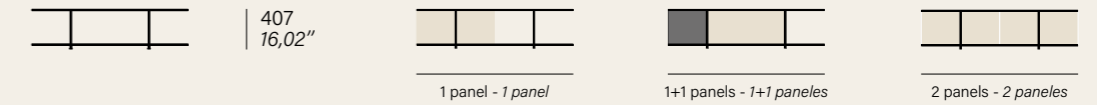
Only for freestanding models
Solo para modelos freestanding

1600

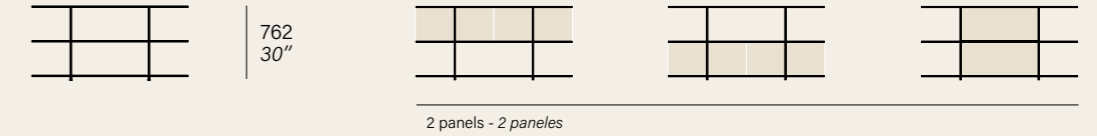
Wall & Freestanding Shelves

Panel composition examples.
Ejemplos de composiciones de paneles.

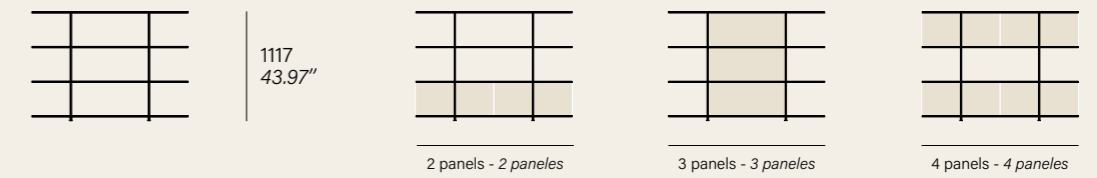
2 shelves



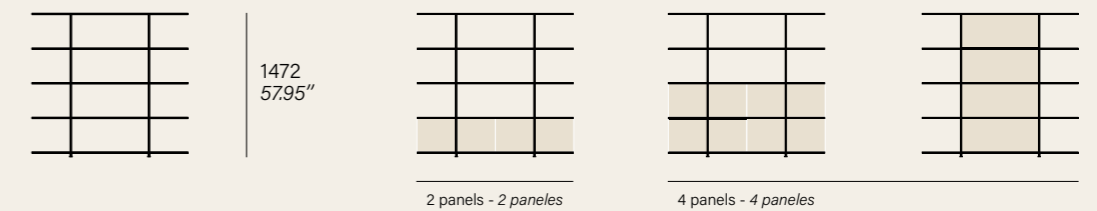
3 shelves



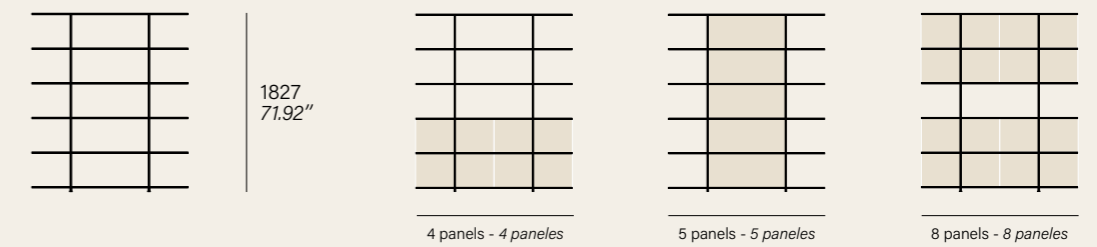
4 shelves



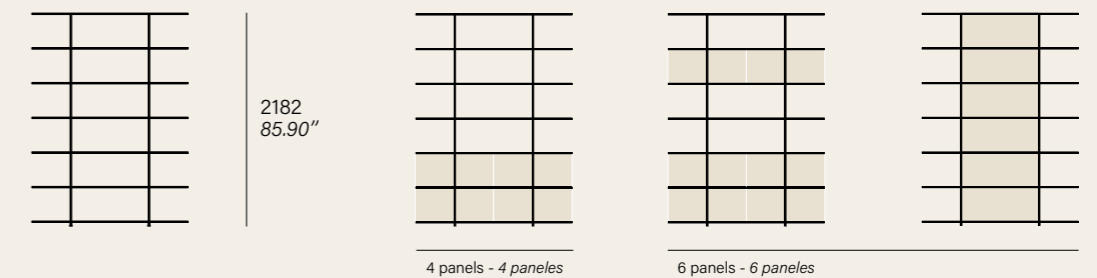
5 shelves



6 shelves



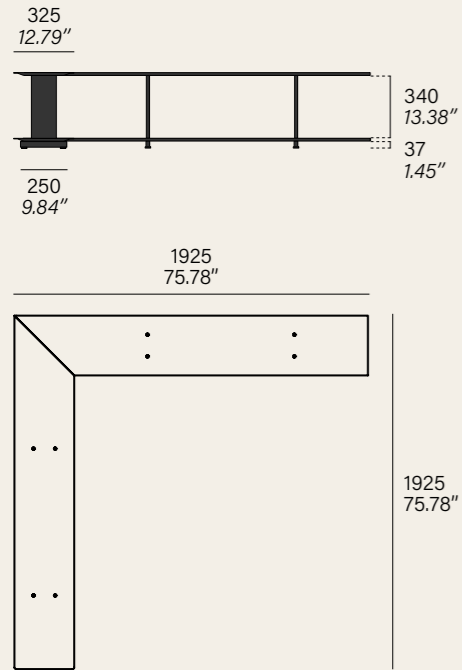
7 shelves



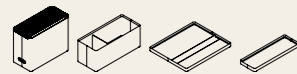
Panels 400x343mm
Paneles 400x343mm

Panels 800x343mm
Paneles 800x343mm

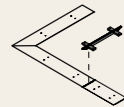
Corner Shelves



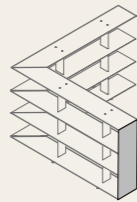
Accessories Corner Wall & Freestanding Shelves



Container accessories
Accesorios contenedores



Joint
Junta



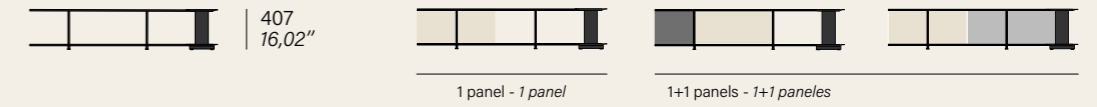
Side enclosure
Cerramiento lateral

1600

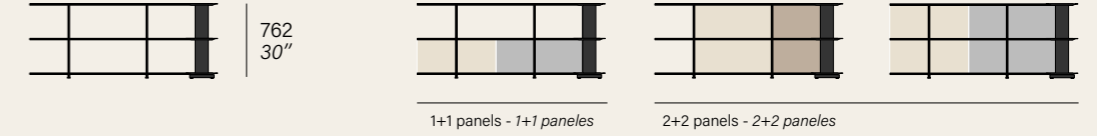
Corner Shelves

Panel composition examples.
Ejemplos de composiciones de paneles.

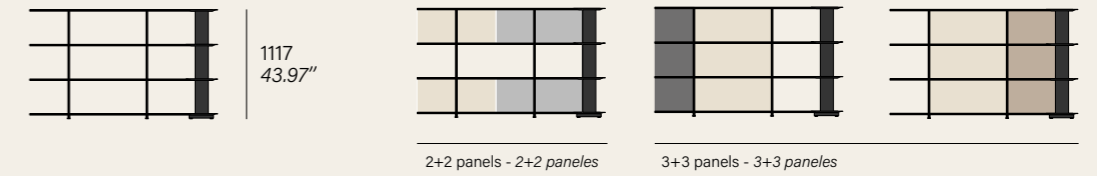
2 shelves



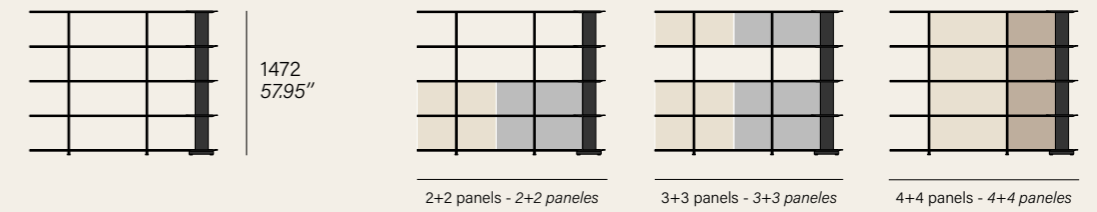
3 shelves



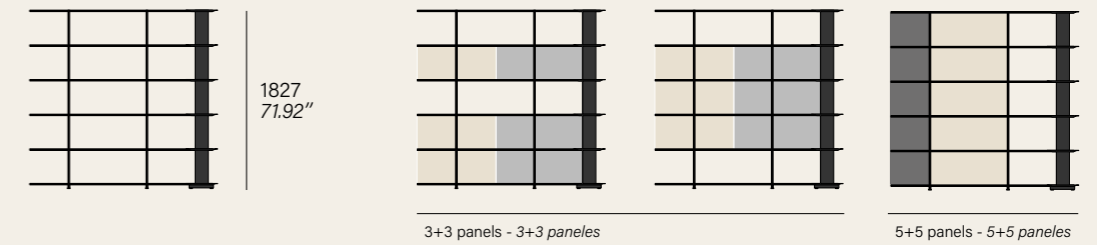
4 shelves



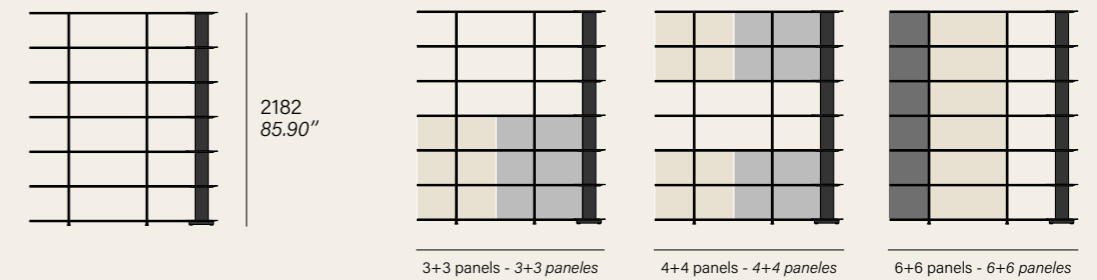
5 shelves



6 shelves

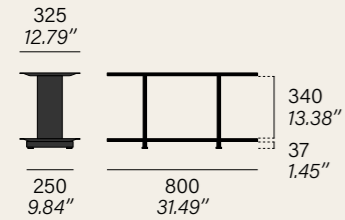


7 shelves



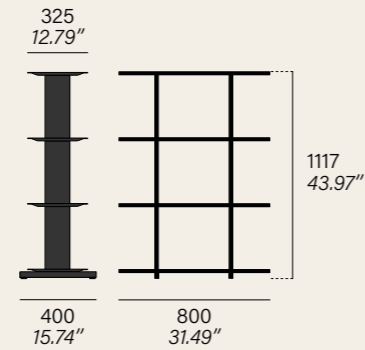
Panels 400x343mm
 Panels 725x343mm
 Panels 800x343mm
 Panels 1125x343mm

Wall & Freestanding Shelves

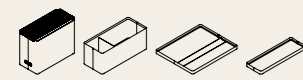


Freestanding Shelves

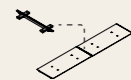
400 mm bases from 4 shelves.
Bases de 400 mm a partir de 4 estantes.



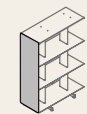
Accessories Wall & Freestanding Shelves



Container accessories
Accesorios contenedores



Joint
Junta



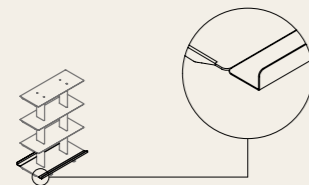
Side enclosure
Cerramiento lateral



Premium top board
Tablero superior premium



Front edge
Tope de estante



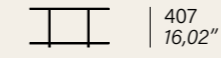
Profile for 400 mm bases
Perfil para bases de 400 mm
Only for freestanding models
Solo para modelos freestanding

800

Wall & Freestanding Shelves

Panel composition examples.
Ejemplos de composiciones de paneles.

2 shelves



1 panel
1 panel

3 shelves

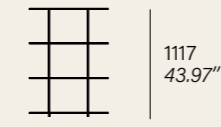


1 panel
1 panel



2 panels
2 paneles

4 shelves



1 panel
1 panel



2 panels
2 paneles

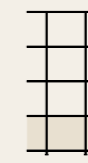
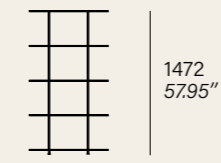


2 panels
2 paneles



2 panels
2 paneles

5 shelves



1 panel
1 panel



2 panels
2 paneles

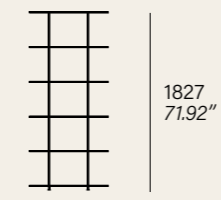


3 panels
3 paneles



3 panels
3 paneles

6 shelves



2 panels
2 paneles



2 panels
2 paneles

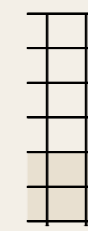
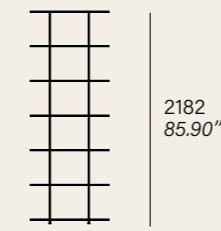


3 panels
3 paneles



3 panels
3 paneles

7 shelves



2 panels
2 paneles



2 panels
2 paneles



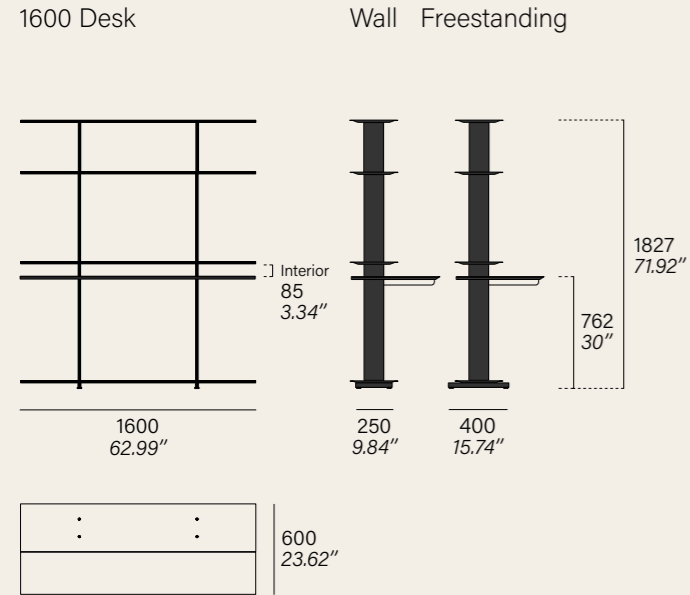
4 panels
4 paneles



4 panels
4 paneles

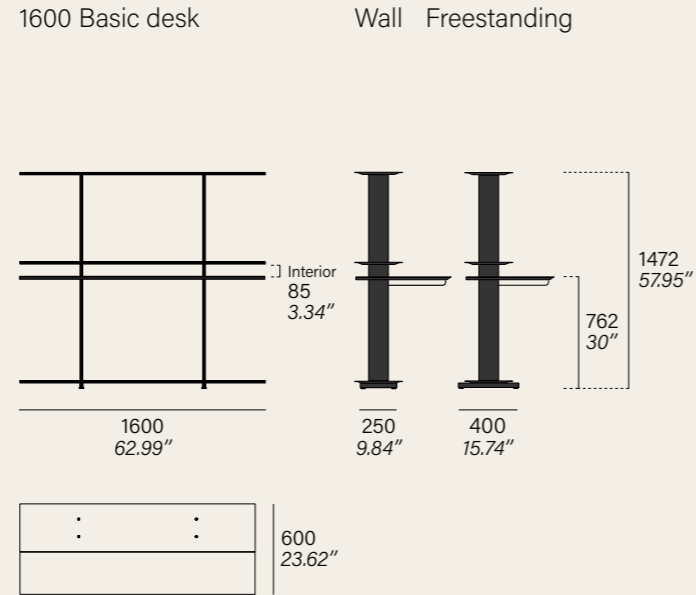
■ Panels 800x343mm
■ Paneles 800x343mm

Desk

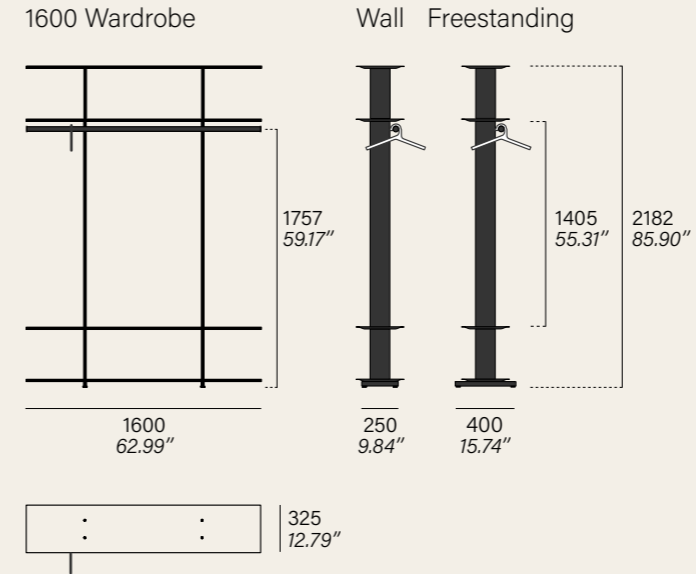


This module must be fixed to the floor or to the wall. Anchors included.
Este módulo debe ser fijado a suelo o a pared. Anclajes incluidos.

Basic Desk

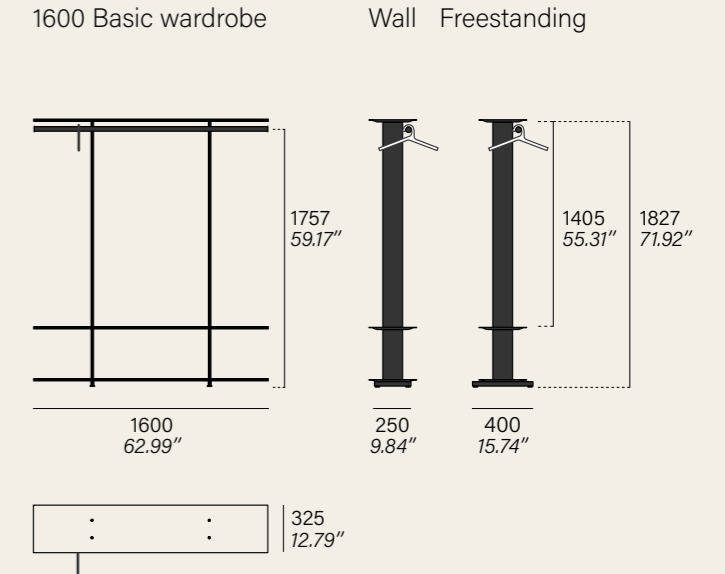


Wardrobe

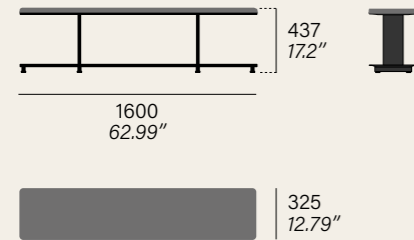


Floor anchoring available.
 Hangers not included.
*Se ofrece anclaje a suelo.
 Perchas no incluidas.*

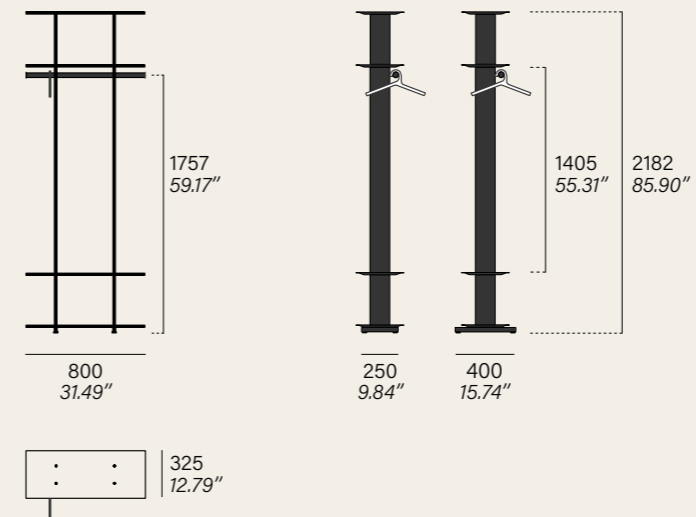
Basic Wardrobe



Bench

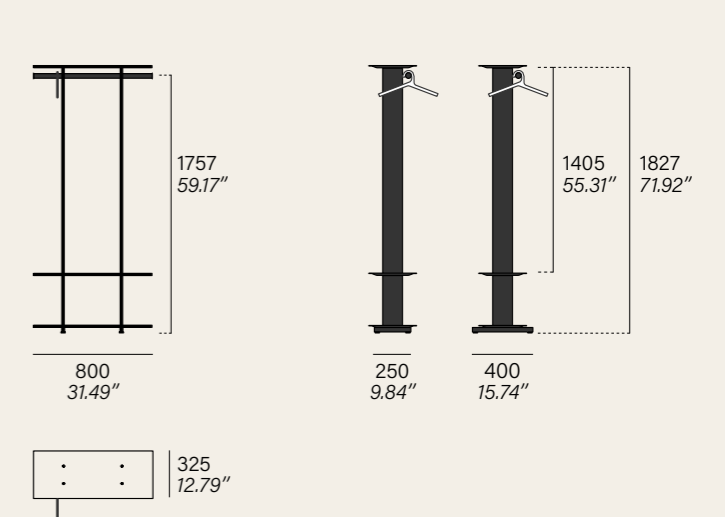


800 Wardrobe



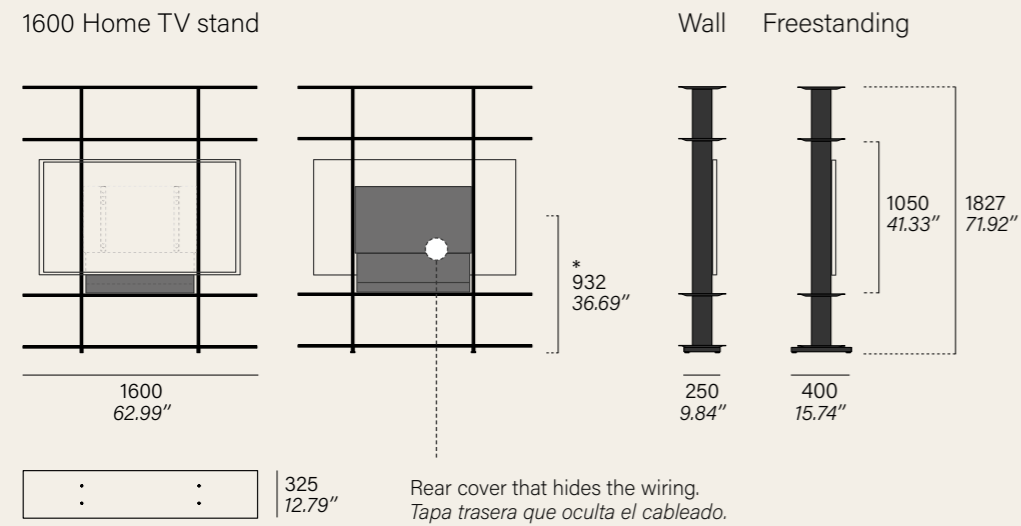
Floor anchoring available.
 Hangers not included.
*Se ofrece anclaje a suelo.
 Perchas no incluidas.*

800 Basic wardrobe



Home TV Stand

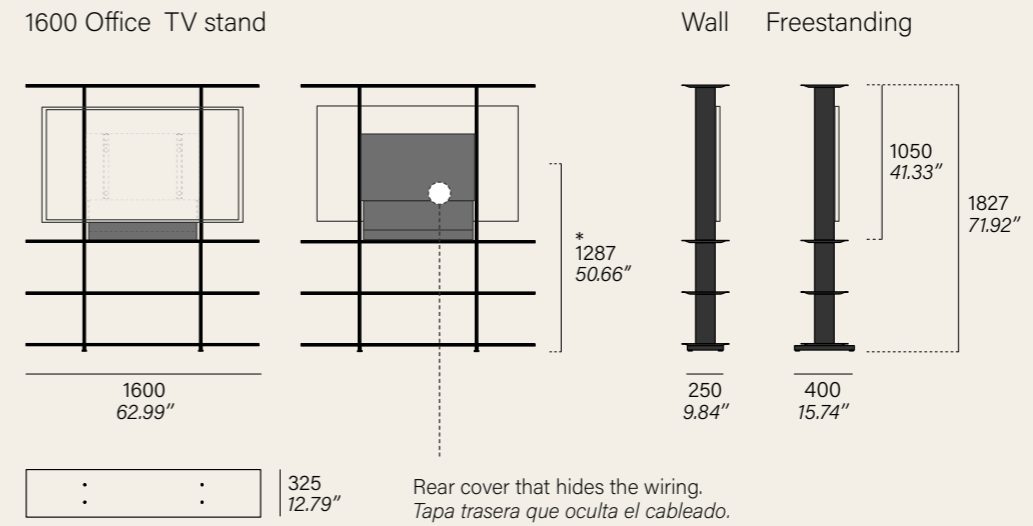
1600 Home TV stand



Floor anchoring available.
Se ofrece anclaje a suelo.

Office TV Stand

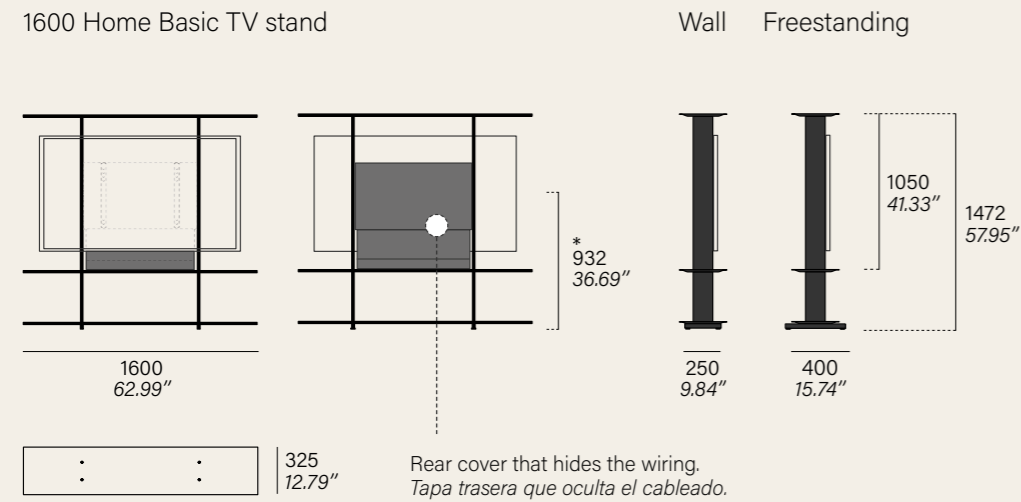
1600 Office TV stand



Floor anchoring available.
Se ofrece anclaje a suelo.

Home Basic TV Stand

1600 Home Basic TV stand



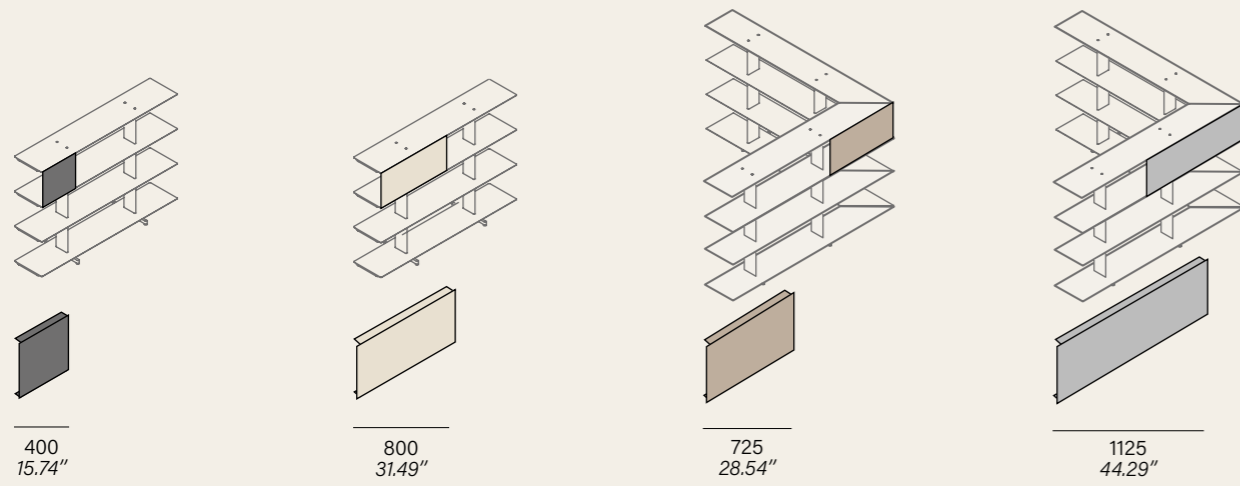
Floor anchoring available.
Se ofrece anclaje a suelo.

GENERAL TV STAND INFORMATION

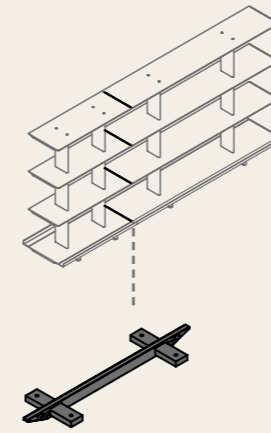
Supports screens up to 70 inches, with a maximum width of 1600 mm.
VESA 100, 200, 300, 400 and 600 mounting interface standard.
Admite pantallas de hasta 70 pulgadas, con un ancho máximo de 1600 mm. Estándar de interfaz de montaje VESA 100, 200, 300, 400 y 600.

* Approximate TV height measurement.
It depends on the television and the height adjustment in the assembly.
Medida de altura de TV aproximada.
Depende del televisor y de la regulación en altura en el montaje.

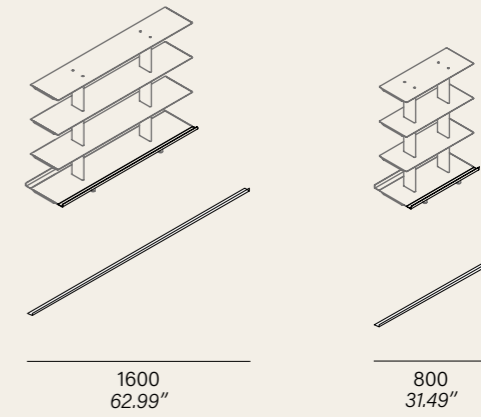
Panels



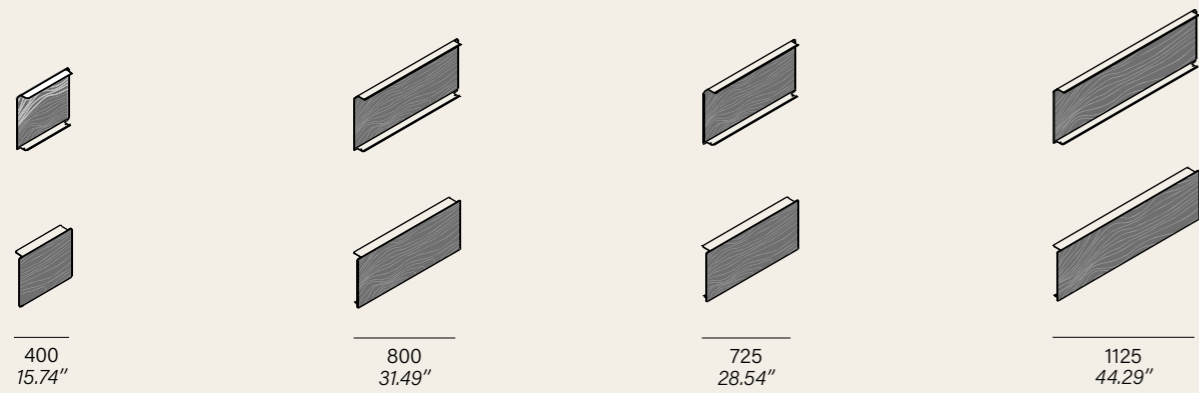
Joint



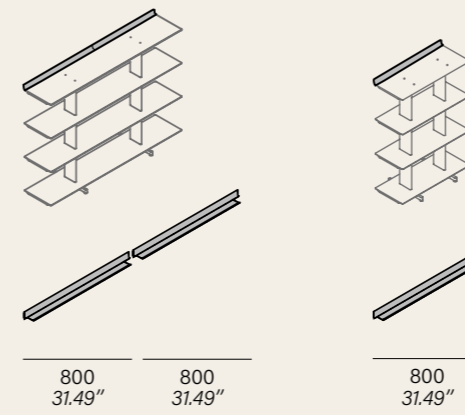
Profile



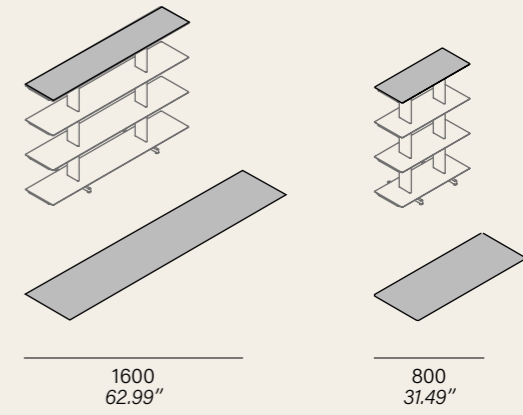
Oak interior/exterior veneer for panels



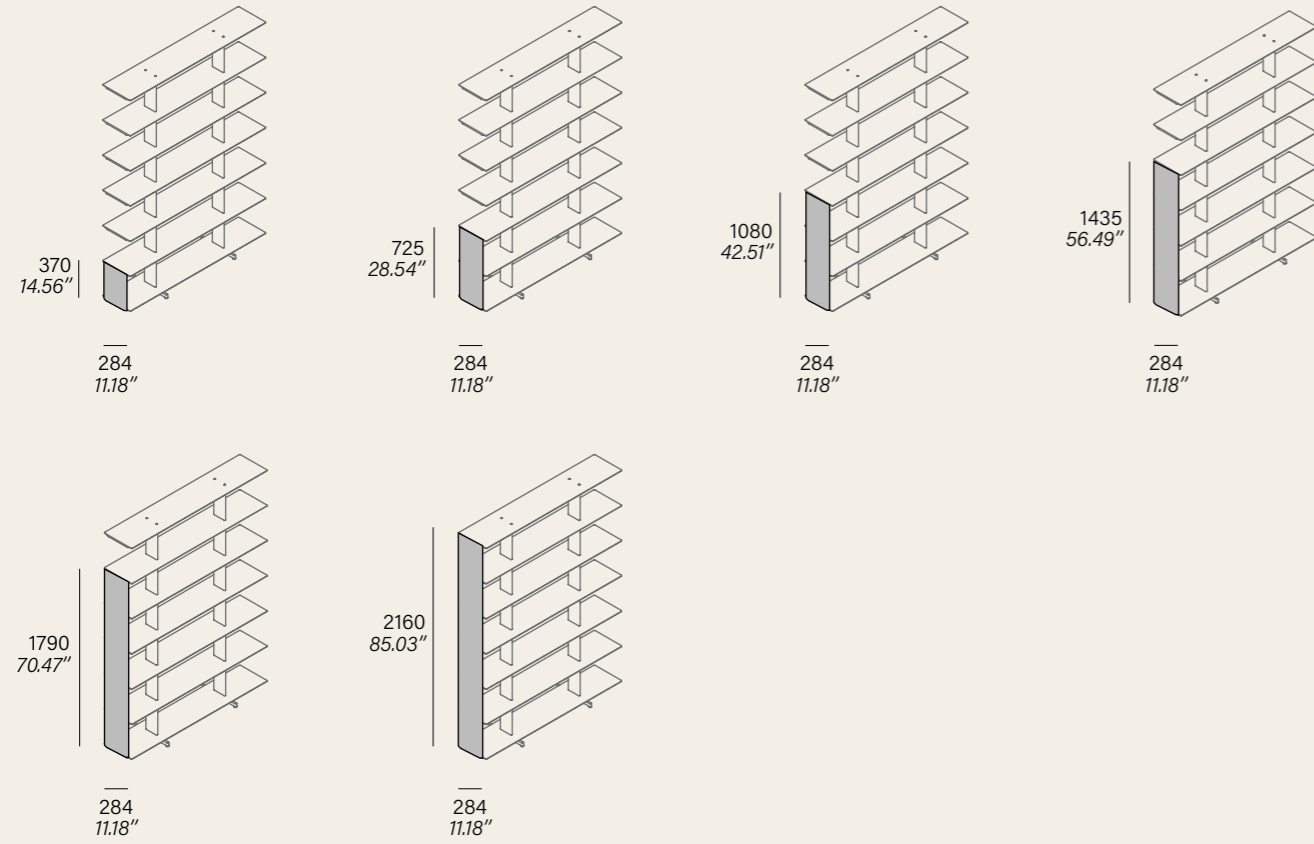
Front edge



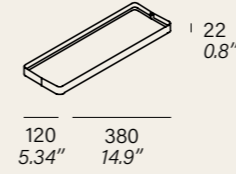
Premium top board



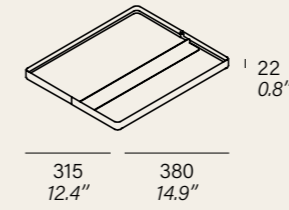
Side enclosure



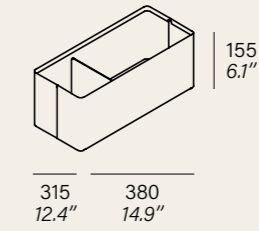
Small tray



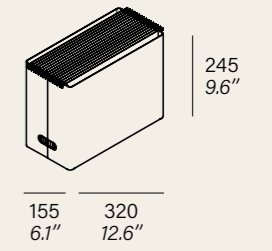
Tray



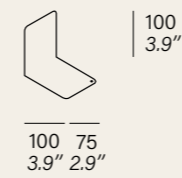
Drawer



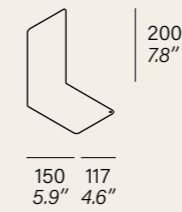
File holder



Small bookend



Bookend



Compositions

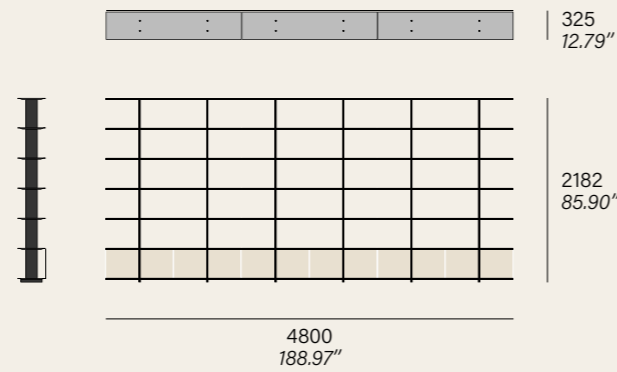
Composition 1

Page 18 & 20-21

(3x) 1600 Wall Shelves /
7 shelves / white

Accessories:

(6x) 800 mm panels / white
(14x) joints / white



Composition 2

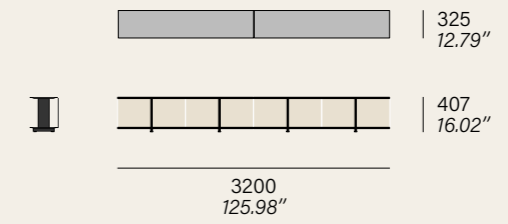
Page 22-23

2A (x1)

(2x) 1600 Freestanding Shelves /
2 shelves / bronze bagana

Accessories:

(4x) 800 mm panels / bronze bagana
(2x) premium top board / Techlam
Tempesta

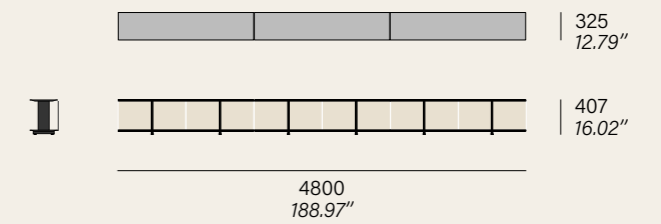


2B (x1)

(3x) 1600 Wall Shelves / 2 shelves /
bronze bagana

Accessories:

(6x) 800 mm panels / bronze bagana
(3x) premium top board / Techlam
Tempest

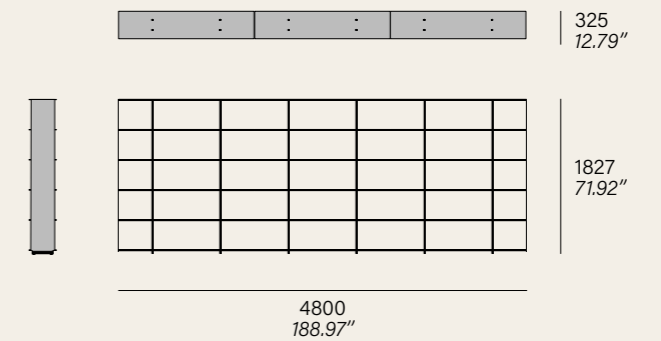


2C (x1)

(3x) 1600 Wall Shelves /
6 shelves / bronze bagana

Accessories:

(2x) side enclosure for 6 shelves /
bronze bagana
(12x) joints / bronze bagana



Composition 3

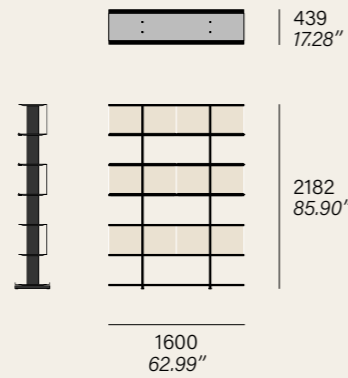
Page 26-27

3A (x2)

(1x) 1600 Freestanding Shelves / 7 shelves / black

Accessories:

- (6x) 800 mm panel / black
- (6x) oak interior veneer for 800 mm panel
- (6x) oak exterior veneer for 800 mm panel
- (6x) front edge / black
- (2x) 1600 mm profiles / black
- (1x) floor anchoring / black

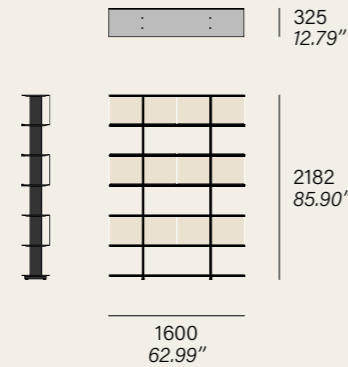


3B (x3)

(1x) 1600 Wall Shelves / 7 shelves / black

Accessories:

- (6x) 800 mm panel / black
- (6x) oak interior veneer for 800 mm panel
- (6x) front edge / black



Composition 4

Page 30-31

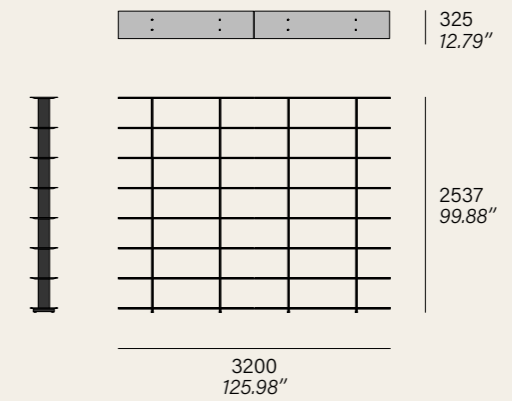
(2x) 1600 Wall Shelves / 7 shelves / black

Accessories:

- (8x) joints / black

Progression items:

- (2x) a 1600 mm shelf unit / black
- (2x) two vertical upstand units / black

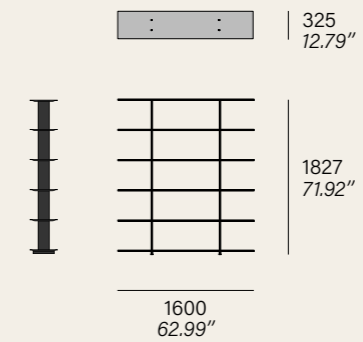


Composition 5

Page 34-35

5A (x2)

(1x) 1600 Wall Shelves / 6 shelves / black

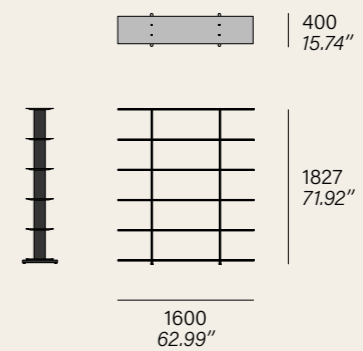


5B (x2)

(1x) 1600 Freestanding Shelves / 6 shelves / black

Accessories:

- (1x) floor anchoring / black



Composition 6

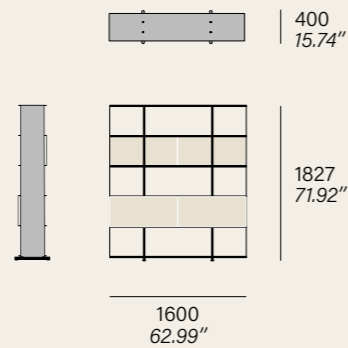
Page 38-39

6 (x4)

(1x) 1600 Freestanding Shelves / 6 shelves / black

Accessories:

- (2x) side enclosure for 6 shelves / black
- (4x) 800 mm panels / black
- (4x) oak interior veneer for 800 mm panels
- (4x) oak exterior veneer for 800 mm panels
- (1x) floor anchoring / black



Composition 7

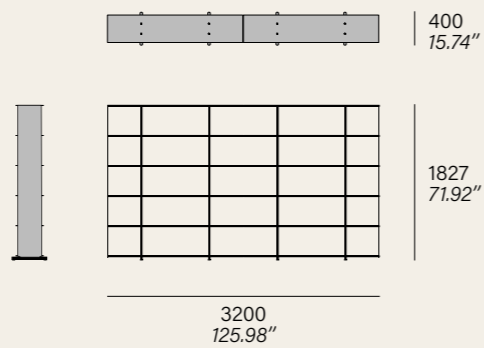
Page 42-43

7A (x5)

(2x) 1600 Freestanding Shelves / 6 shelves / black

Accessories:

- (2x) side enclosure for 6 shelves / black
- (6x) joints / black
- (2x) floor anchoring / black

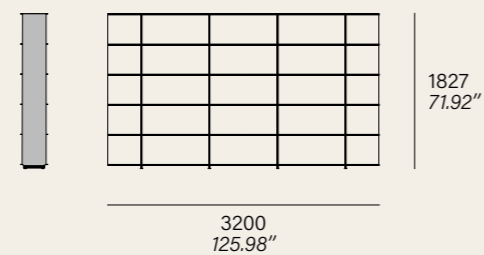


7B (x3)

(2x) 1600 Wall Shelves / 6 shelves / black

Accessories:

- (2x) side enclosure for 6 shelves / black
- (6x) joints / black



Composition 8

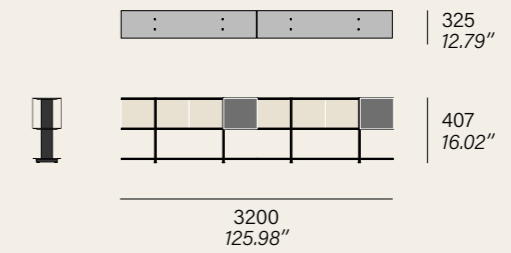
Page 46-47

8A (x1)

(2x) 1600 Freestanding Shelves / 3 shelves / black

Accessories:

- (4x) 800 mm panels / black
- (2x) 400 mm panels / black
- (4x) oak interior veneer for 800 mm panels
- (2x) oak exterior veneer for 400 mm panels
- (3x) joints / black

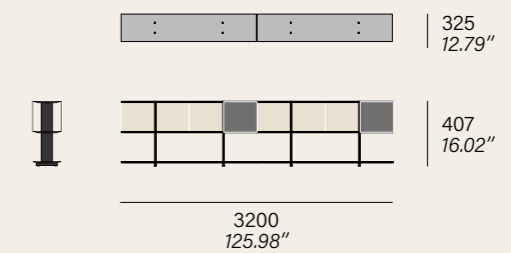


8B (x1)

(2x) 1600 Wall Shelves / 3 shelves / black

Accessories:

- (4x) 800 mm panels / black
- (2x) 400 mm panels / black
- (4x) oak interior veneer for 800 mm panels
- (2x) oak exterior veneer for 400 mm panels
- (3x) joints / black



Composition 9

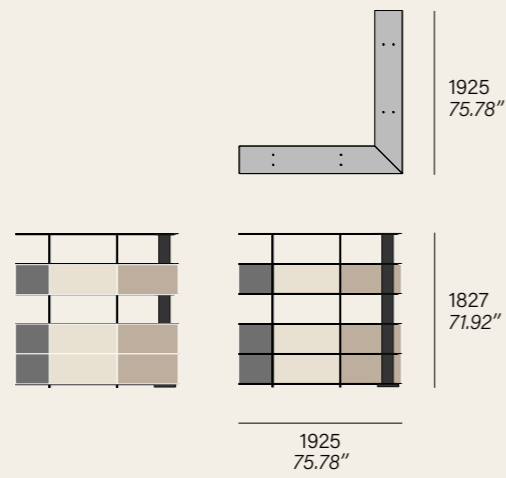
Page 50-51

9 (x2)

(1x) 1600 Corner Shelves / 6 shelves / black

Accessories:

- (6x) 400 mm panel / black
- (6x) 725 mm panel / black
- (6x) 800 mm panel / black
- (6x) oak interior veneer for 400 mm panel
- (6x) oak interior veneer for 725 mm panel
- (6x) oak interior veneer for 800 mm panel



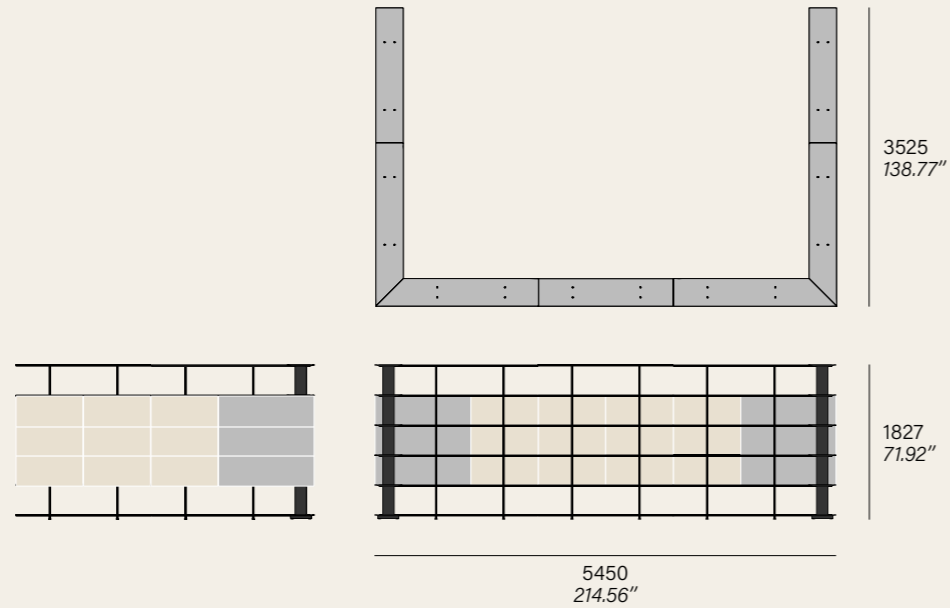
Composition 10

Page 54-55

(2x) 1600 Corner Shelves / 6 shelves / black
(3x) 1600 Freestanding Shelves / 6 shelves / black

Accessories:

- (12x) 1125 mm panels / white
- (30x) 800 mm panels / white
- (24x) joints / black



Composition 11

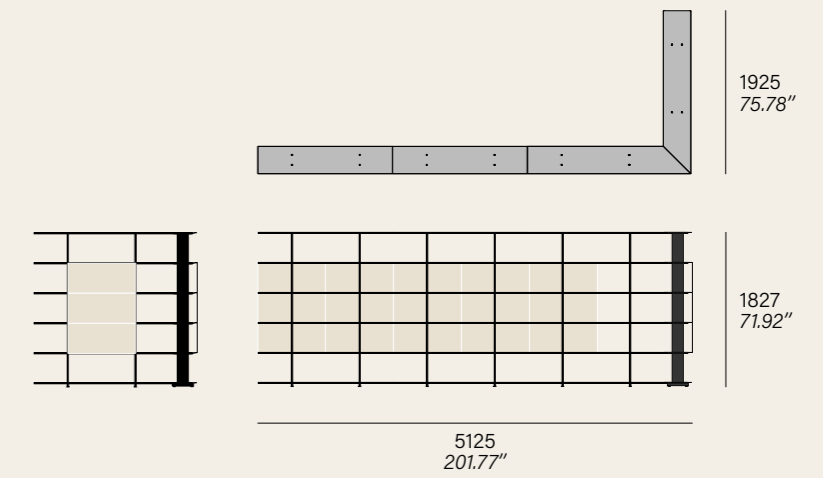
Page 56-57

11A (x1)

(1x) 1600 Corner Shelves / 6 shelves / black
(2x) 1600 Freestanding Shelves / 6 shelves / black

Accessories:

- (18x) 800 mm panels / bronze bagana
- (12x) joints / black

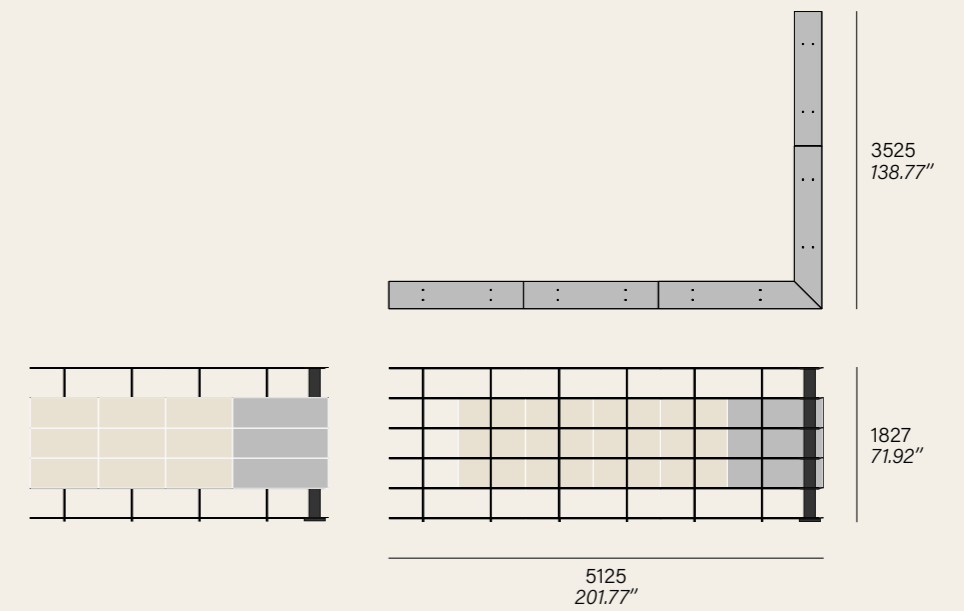


11B (x1)

(1x) 1600 Corner Shelves / 6 shelves / black
(3x) 1600 Freestanding Shelves / 6 shelves / black

Accessories:

- (6x) 1125 mm panels / bronze bagana
- (21x) 800 mm panels / bronze bagana
- (18x) joints / black



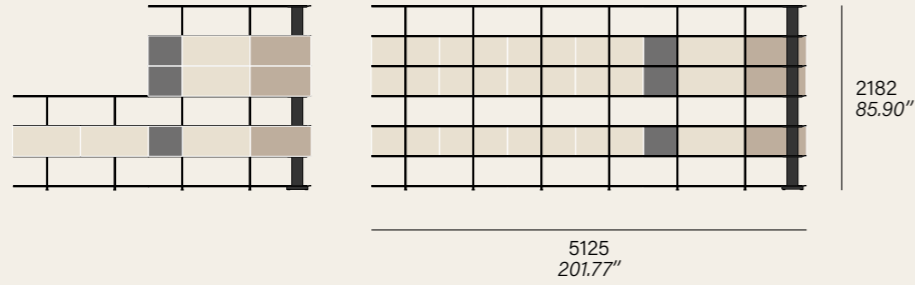
Composition 12

Page 60-61

- (1x) 1600 Corner Shelves / 7 shelves / forged grey
- (2x) 1600 Wall Shelves / 7 shelves / forged grey
- (1x) 1600 Wall Shelves / 4 shelves / forged grey

Accessories:

- (6x) 400 mm panel / forged grey
- (6x) 725 mm panel / forged grey
- (20x) 800 mm panel / forged grey
- (6x) oak interior veneer for 400 mm panel
- (6x) oak interior veneer for 725 mm panel
- (20x) oak interior veneer for 800 mm panel
- (18x) joints / forged grey



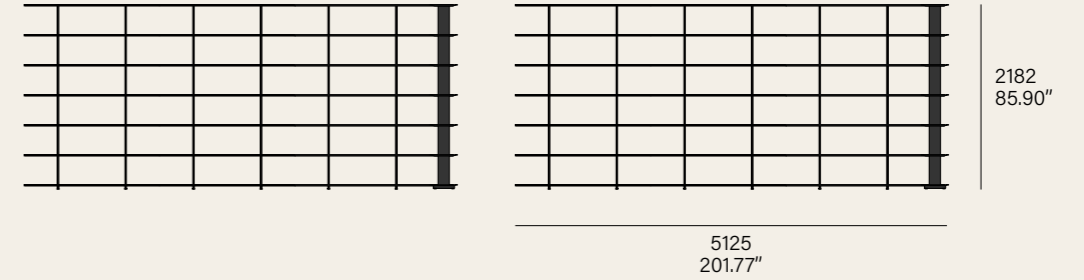
Composition 13

Page 62-63

- (1x) 1600 Corner Shelves / 7 shelves / black
- (4x) 1600 Wall Shelves / 7 shelves / black

Accessories:

- (28x) joints / black



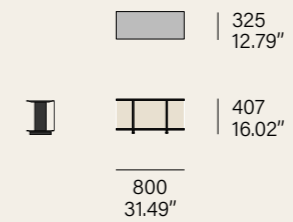
Composition 14

Page 65 & 68

- (1x) 800 Wall Shelves / 2 shelves / bronze bagana

Accessories:

- (1x) 800 mm panels / bronze bagana
- (1x) 800 mm premium top board / Techlam Tempesta porcelain



Composition 15

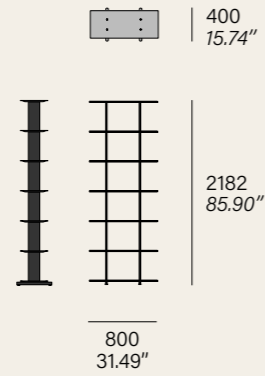
Page 74-75

15 (x2)

(1x) 800 Freestanding Shelves / 7 shelves / black

Accessories:

(1x) floor anchoring / black



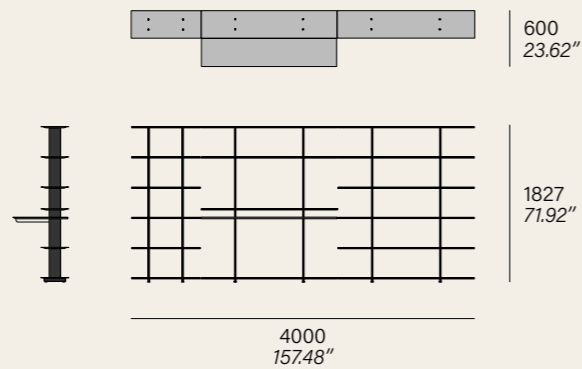
Composition 16

Page 78-79

(1x) 1600 Wall Shelves / 6 shelves / black
 (1x) 800 Wall Shelves / 6 shelves / black
 (1x) 1600 Wall Desk / black / natural oak board

Accessories:

(6x) joints / black



Composition 17

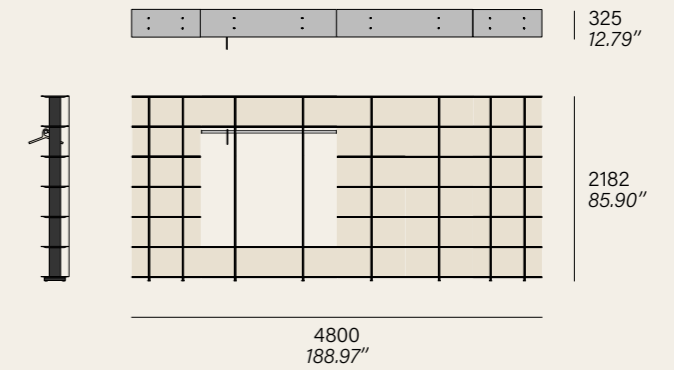
Page 82-83

17A (x1)

(1x) 1600 Wall Shelves / 7 shelves / silk grey
 (2x) 800 Wall Shelves / 7 shelves / silk grey
 (1x) 1600 Wall Wardrobe / silk grey / chrome-plated hanging rod

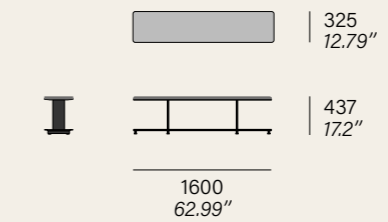
Accessories:

(28x) 800 mm panels / silk grey
 (28x) oak interior veneer for 800 mm panel
 (15x) joints / silk grey



17B (x1)

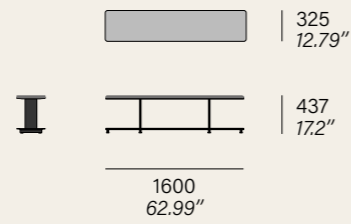
(1x) 1600 Bench / silk grey / beige N07 upholstery



Composition 18

Page 86

(1x) 1600 Bench / silk grey / light grey N51 upholstery

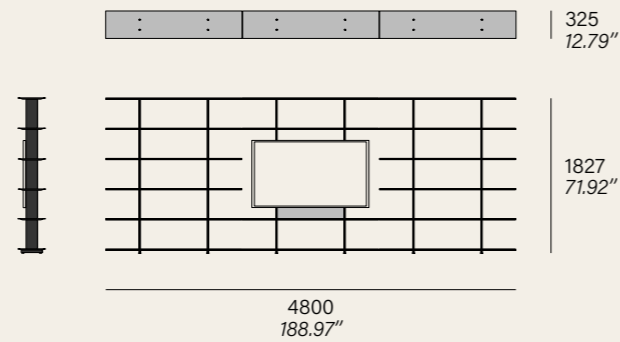


Composition 19

Page 90-91

(2x) 1600 Wall Shelves / 6 shelves / black
 (1x) 1600 Wall Home TV Stand / black

Accessories:
 (8x) joints / black



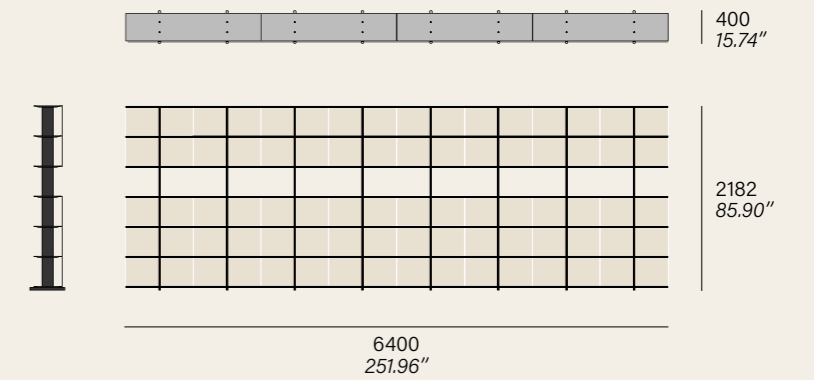
Composition 20

Page 98-99

20A (x1)

(4x) 1600 Freestanding Shelves / 7 shelves / silk grey

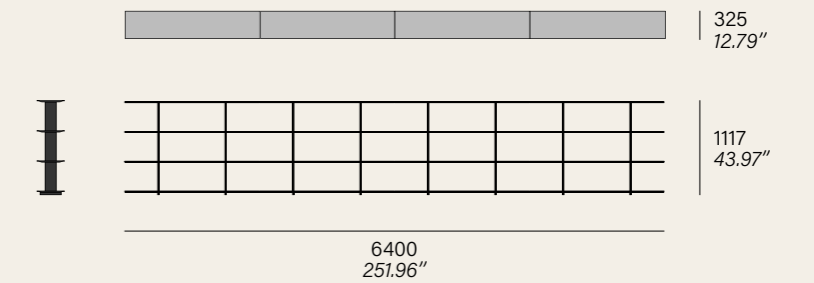
Accessories:
 (40x) 800 mm panels / silk grey
 (21x) joints / silk grey
 (4x) floor anchoring / silk grey



20B (x1)

(4x) 1600 Wall Shelves / 4 shelves / silk grey

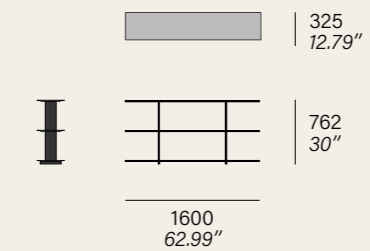
Accessories:
 (4x) 1600 mm premium top board / silk grey painted aluminum
 (12x) joints / silk grey



20C (x1)

(1x) 1600 Freestanding Shelves / 3 shelves / silk grey

Accessories:
 (1x) 1600 mm premium top board / silk grey painted aluminum

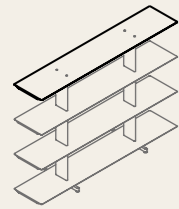


Finishes

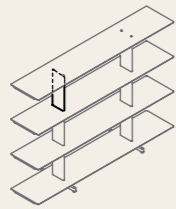
Shelving Pieces

Different finishes can be chosen for the pieces on the same shelving.

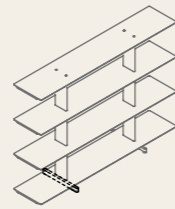
Se pueden elegir diferentes acabados para las piezas de una misma estantería.



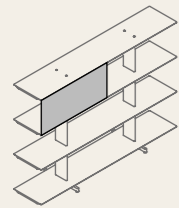
Shelf
Estante



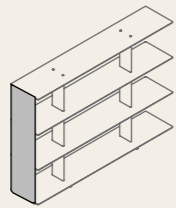
Vertical Upstand
Montante



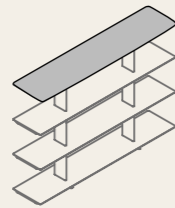
Base
Base



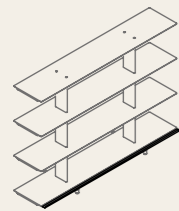
Panel
Panel



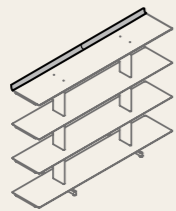
Side enclosure
Cerramiento lateral



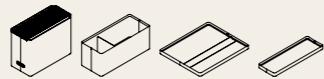
Premium top board
Tablero superior premium



Profile
Perfil



Front edge
Tope de estante



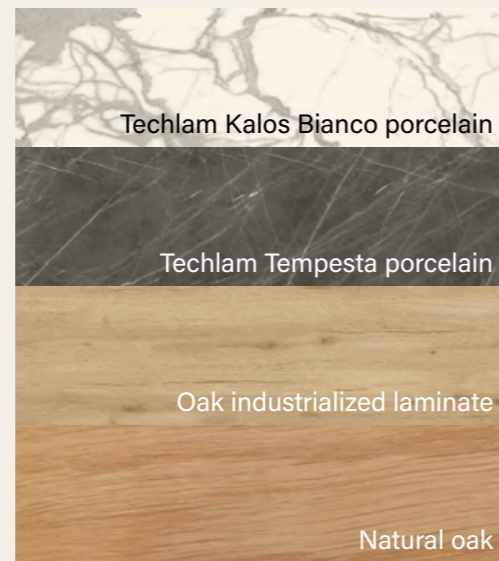
Containers
Contenedores

Finishes

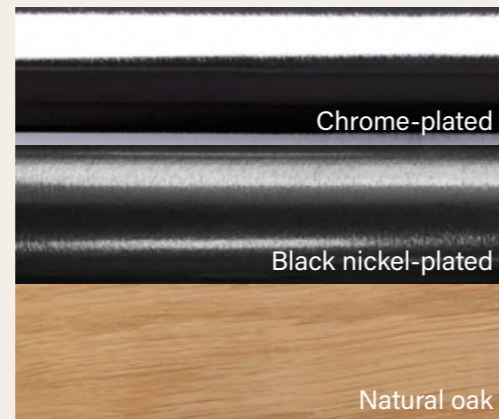
Metal Colors



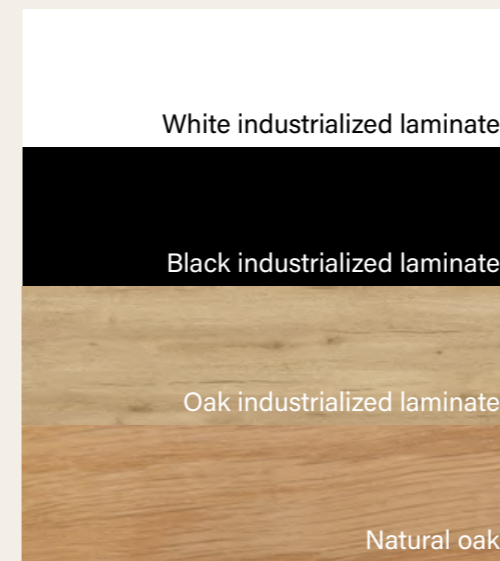
Premium Finishes



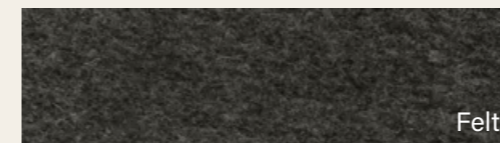
Hanging Rod



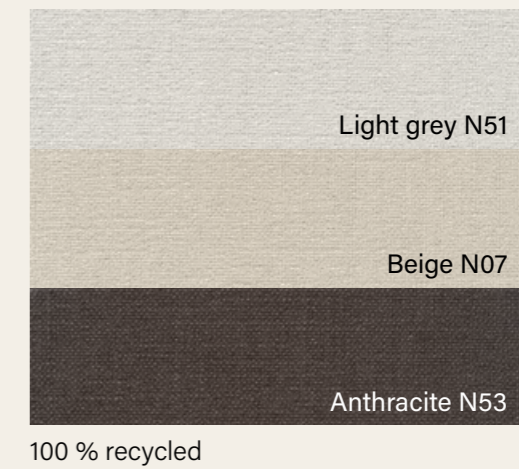
Desk Board



Accessories



Bench Upholstery



From Systemtronic we would like to thank all the companies that have collaborated in the accomplishment of this catalog.

ENG

Desde Systemtronic agradecemos a todas las empresas que han colaborado en la realización de este catálogo.

ESP

Thanks

MOROSO[™]

arper

Artemide[®]

lzf

VIBIA

viccarbe


SANTA & COLE

nanimarquina

Blasco&Vila

jmm
josé martínez-medina

FLOS

vitra.

STUA

ESSENZIALED[®]
Led Lighting | www.essenzialed.com

BLACK TONE by José Martínez Medina

G/IN



This publication may not be reproduced in whole or in part in any manner whatsoever without the written permission of the publisher. All models are protected by international patent.

ENG

Esta publicación no puede ser reproducida en todo o en parte sin el permiso escrito del editor. Todos los modelos están protegidos mediante patente internacional.

ESP

Credits

Art Direction
Pablo Gironés Office
Isho Design

Editorial Design
Pablo Gironés Office

Images
Teddy Hernández
Eduardo Corzo

Printed
June 2022

www.st-systemtronic.com
C/ del Mar 3 | Rafelbunyol
València | Spain
Tel. +34 961 852 784
nacional@st-systemtronic.com
export@st-systemtronic.com

